

# MAHMOUD EL HAJJAJI PORTFOLIO

Architecture - Project management

[www.moud.ca](http://www.moud.ca)





MAHMOUD EL HAJJAJI  
ARCHITECT

Experienced architect with 10 years of expertise in project management and BIM, optimizing time, budget, and workflow efficiency. Combines creativity and technical precision to design innovative and functional solutions. Possesses strong cross-cultural communication skills with fluency in French, English, Arabic, and German. Committed to process optimization and project success.

QUALIFICATIONS

- Creativity and technical precision: Designs innovative projects with a keen eye for detail and technical feasibility, ensuring aesthetically pleasing and functional solutions.
- Project management and coordination: Supervision of teams, consultants, and clients to ensure compliance with deadlines, budgets, and technical requirements.
- BIM process optimization: Implementation and management of BIM systems (Revit, AutoCAD), enhancing workflow efficiency and reducing internal production time and costs by 30%.

PROFESSIONAL EXPERIENCE

**ARCHITECT / PROJECT MANAGER** - RLA ARCHITECTURE, Ottawa, Canada (August 2021 - January 2025)  
Recruited by RLA Architecture, a renowned architecture firm in Ottawa, to manage complex projects, coordinate teams, and optimize BIM processes.

**ARCHITECT** - MAHMOUD EL HAJJAJI ARCHITECT, Rabat, Morocco (June 2016 - March 2021)  
Founded and led Mahmoud El Hajjaji Architecte, an architecture and interior design firm, to design and execute innovative residential and commercial projects.

**ARCHITECTURAL INTERN** - INTERCONSTRUCTION, Montréal (June 2011 - September 2012 & May 2014 - March 2016)  
Recruited by InterConstruction, a company specializing in design and construction (design-build), to produce technical drawings, support senior architects, and create renderings and presentations.

PROJECTS

- Residential**
- Metcalf multiunit high rise building - Ottawa (2022 - 2024)
  - Laurier multiunit high rise building - Ottawa (2022 - 2024)
  - Queen multiunit high rise building - Kingston (2021 - 2022)
  - SHARO HOUSE - Casablanca (2019): Architecture
  - BLACK PEARL HOUSE - El Jadid (2018): Architecture
  - IC HOUSE - El Jadida (2016): Architecture
- Commercial**
- CITY SNACK RESTAURANT - Rabat (2020): Interior design, fit-up, architecture, contract administration
  - TAZAJ RESTAURANT - Casablanca (2018): Interior design, fit-up, contract administration
  - COCON CHILD CARE - Montreal (2015): Interior design, fit-up, architecture, contract administration
- Research**
- GREEN DIAMOND - Research project - Evolo competition 2014
  - RESTORATIVE REFUGE - Research project 2014

EDUCATION

- **MASTER OF ARCHITECTURE**, University of Calgary, Calgary (September 2012 - April 2014)
- **BACHELOR'S DEGREE IN ENVIRONMENTAL DESIGN (Architecture)**, Université of Québec in Montral (September 2007 - April 2011)
- **SHORT MASTER OF E-BUSINESS** (Online), TELUQ UNIVERSITE IN MONTREAL (Sep 2011 - April 2012)



# RESIDENTIAL



**LAURIER TOWER**

Ottawa, Canada  
2022 - 2024



**METCALF TOWER**

Ottawa, Canada  
2022 - 2024



**QUEEN TOWER**

Kingston, Canada  
2021 - 2022



**SHARO HOUSE**

Casablanca, Morocco  
2019



**BLACK PEARL**

El Jadida, Morocco  
2018



**IC HOUSE**

El jadida, Morocco  
2016



# METCALF TOWER

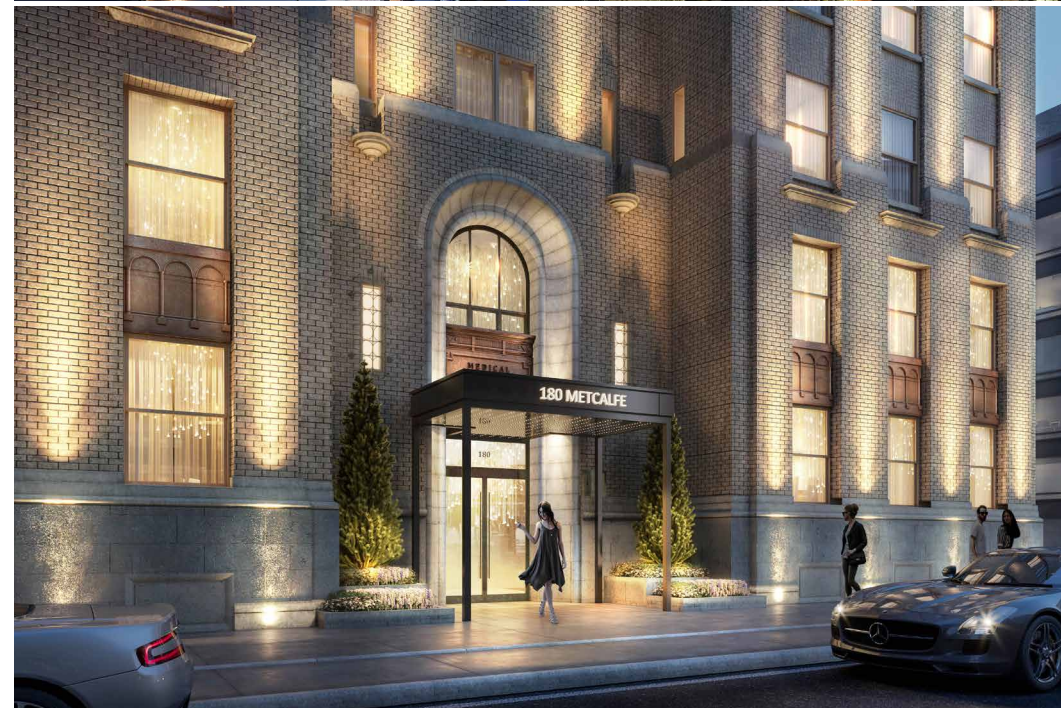
**Role:** Architect - Project lead

**Firm:** RLA Architecture, Ottawa,  
Canada

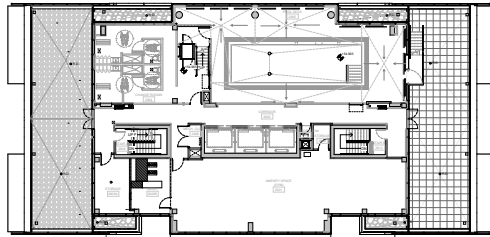
**Scope of work:**

- Schematic design
- Design development
- Working drawing & coordination

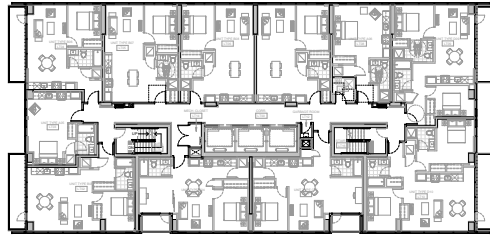
As Project Lead Architect for Metcalf Tower, I managed the full architectural process from schematic design to construction coordination, ensuring a seamless integration between the historic façade and the modern high-rise tower. I led BIM execution in Revit, optimizing workflows to improve efficiency and accuracy, reducing internal production time by 30%. My role involved spatial optimization, energy-efficient design strategies, and high-end architectural detailing. I coordinated with consultants, engineers, and contractors, ensuring compliance with building codes while maintaining design integrity. This project highlights my expertise in heritage preservation, modern high-rise design, and BIM-driven execution, reinforcing my ability to blend innovation, functionality, and contextual sensitivity in complex urban projects.







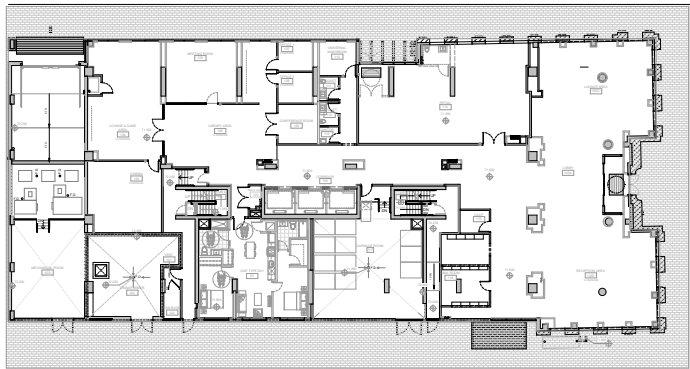
Penthouse



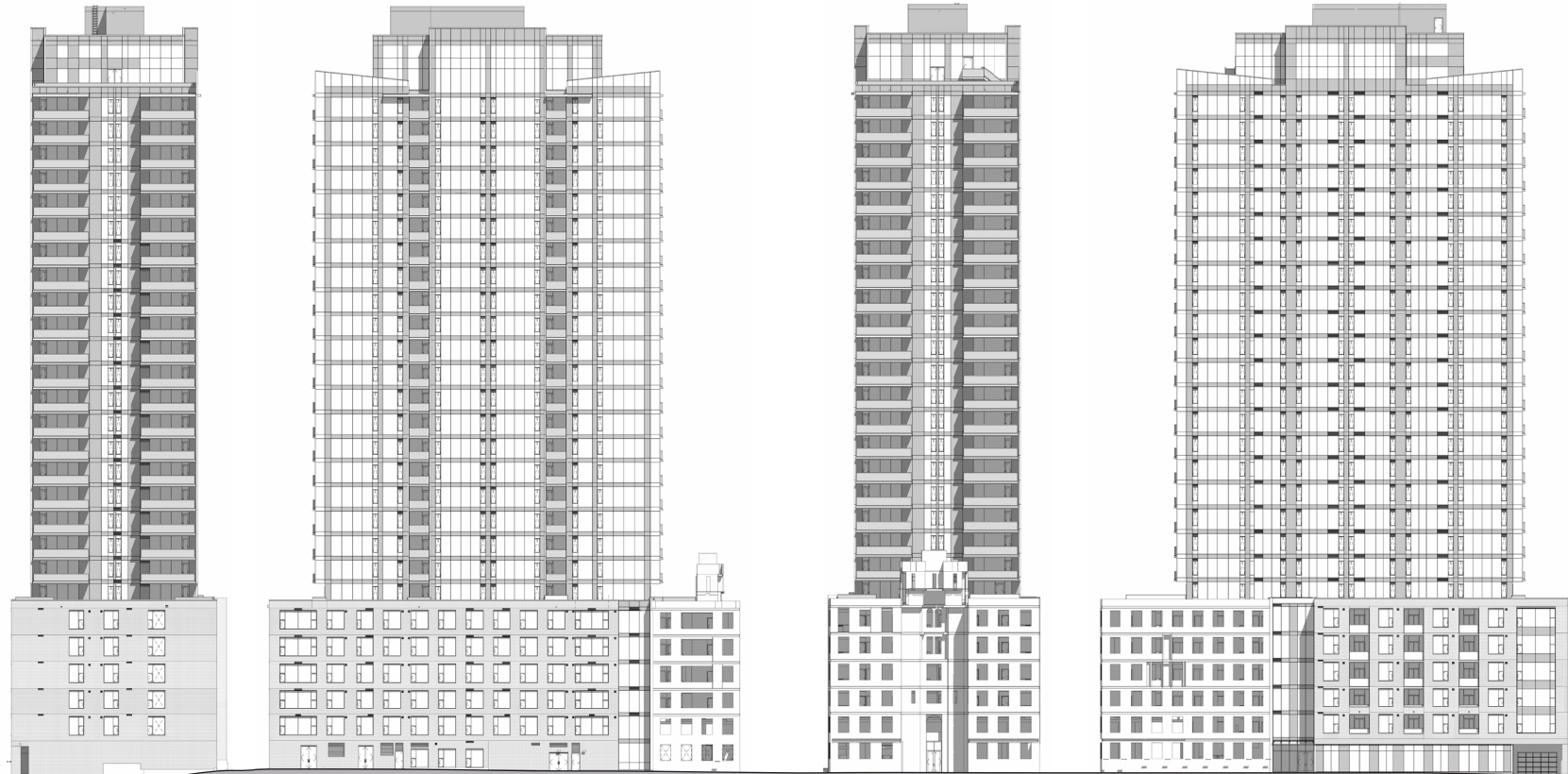
Level 7th to 29th



Level 2nd to 6th



Ground floor



West elevation

South elevation

East elevation

North elevation





# LAURIER TOWER

**Role:** Architect - Project lead

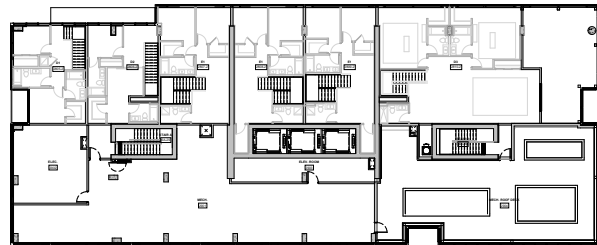
**Firm:** RLA Architecture, Ottawa,  
Canada

**Scope of work:**

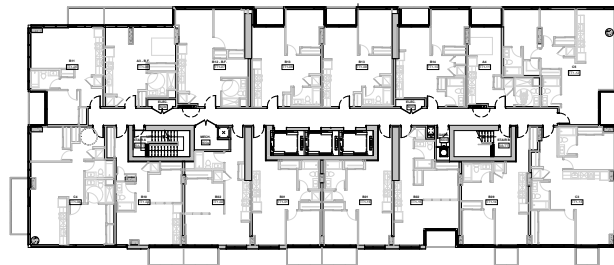
- Schematic design
- Design development
- Working drawing & coordination

As Project Lead Architect for Laurier Tower, a 27-storey mixed-use high-rise, I managed the full architectural process from schematic design to construction coordination, ensuring a seamless integration with the adjacent historical church. I led the BIM execution in Revit, optimizing workflows and reducing production time by 30%, while ensuring precise coordination between architecture, structure, and MEP. My role focused on urban integration, spatial efficiency, and sustainable strategies, using a curtain wall system and podium materiality to balance heritage and modern design. Collaborating with consultants, engineers, and city officials, I ensured regulatory compliance and a harmonious contribution to Ottawa's skyline.

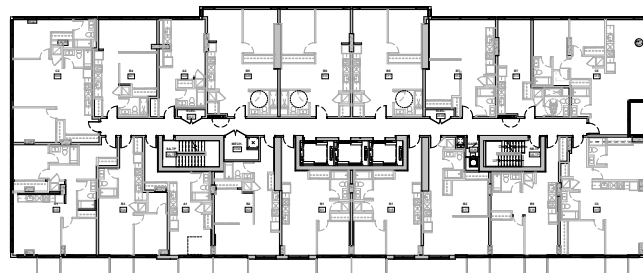




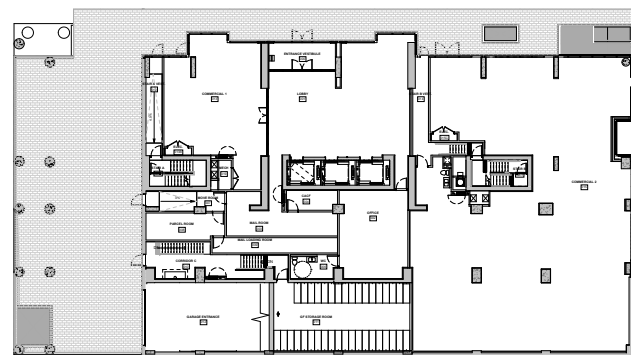
Level 29th



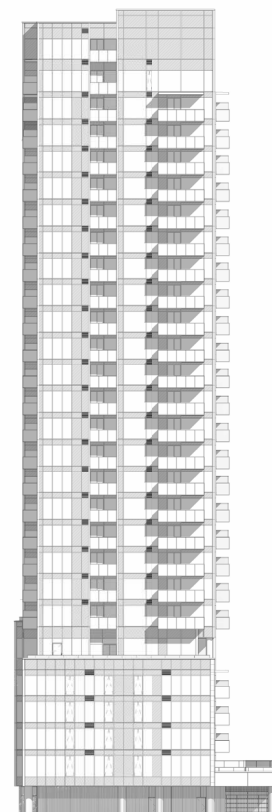
Level 8th to 25th



Level 3rd to 5th



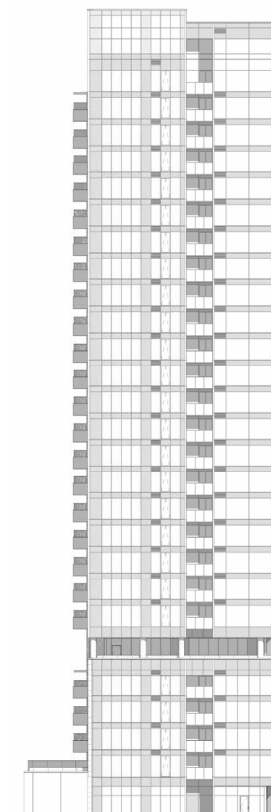
Ground floor



West elevation



South elevation



East elevation



North elevation



# QUEEN TOWER

**Role:** Architect - Project lead

**Firm:** RLA Architecture, Ottawa,  
Canada

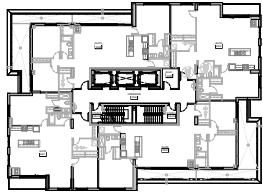
**Scope of work:**

- Schematic design
- Design development
- Working drawing & coordination

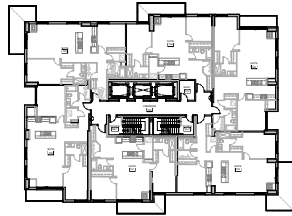
As Project Lead Architect for Queen Tower, a sophisticated mixed-use high-rise, I oversaw the entire architectural process, ensuring a seamless integration with the historical urban fabric while introducing a modern, elegant aesthetic. I led the BIM execution in Revit, streamlining workflows and optimizing coordination between architecture, structure, and MEP. The project emphasizes spatial efficiency, natural lighting, and pedestrian-friendly urban spaces, enhancing the street-level experience with landscaped areas and commercial integration. I worked closely with consultants, engineers, and city officials to ensure regulatory compliance and a harmonious contribution to the evolving cityscape.



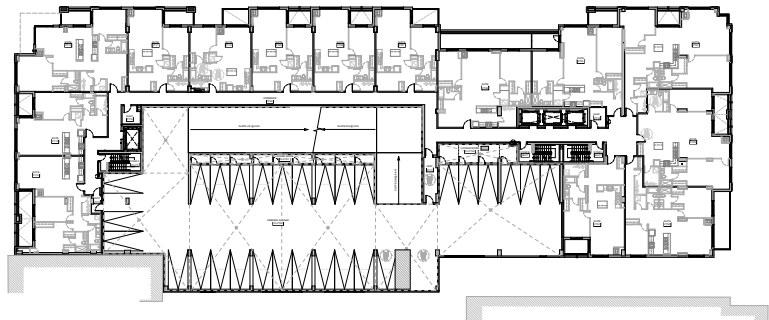




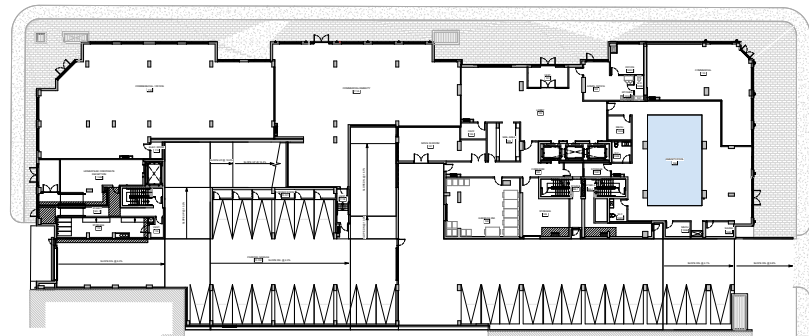
Level 24th



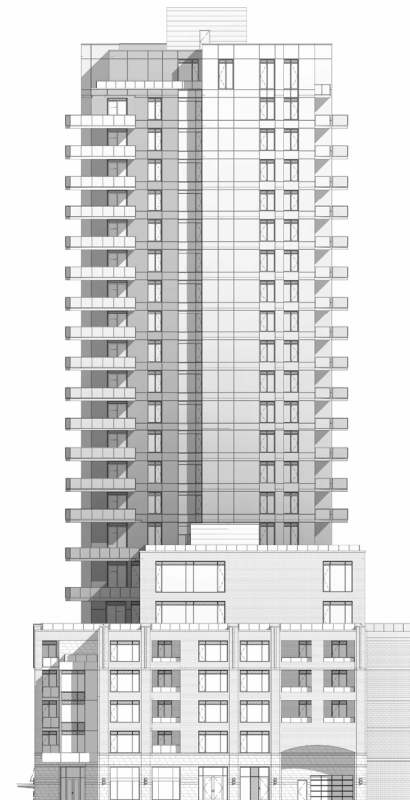
Typical tower - Level 8nd to 22th



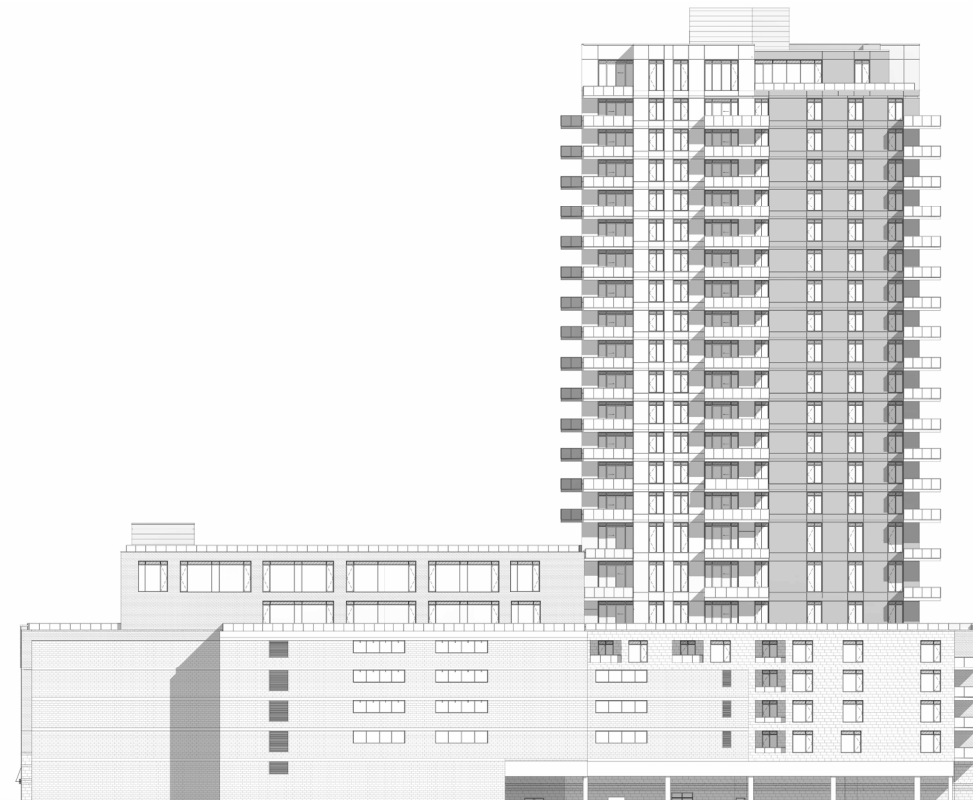
Typical podium - Level 2nd to 5th



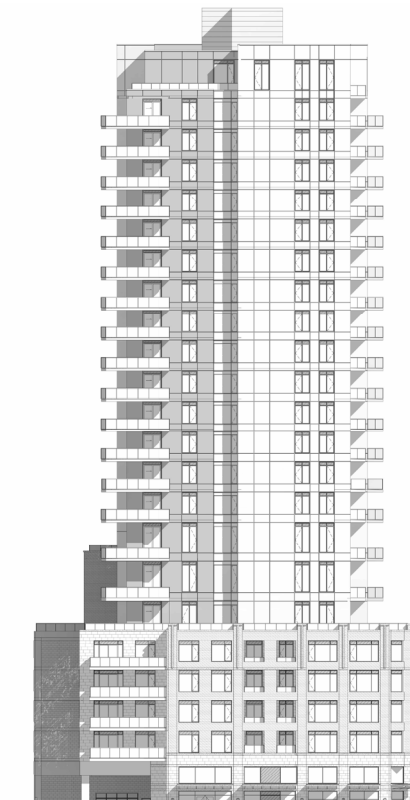
Ground floor



West elevation



South elevation



East elevation



North elevation





# SHARO HOUSE

**Role:** Architect

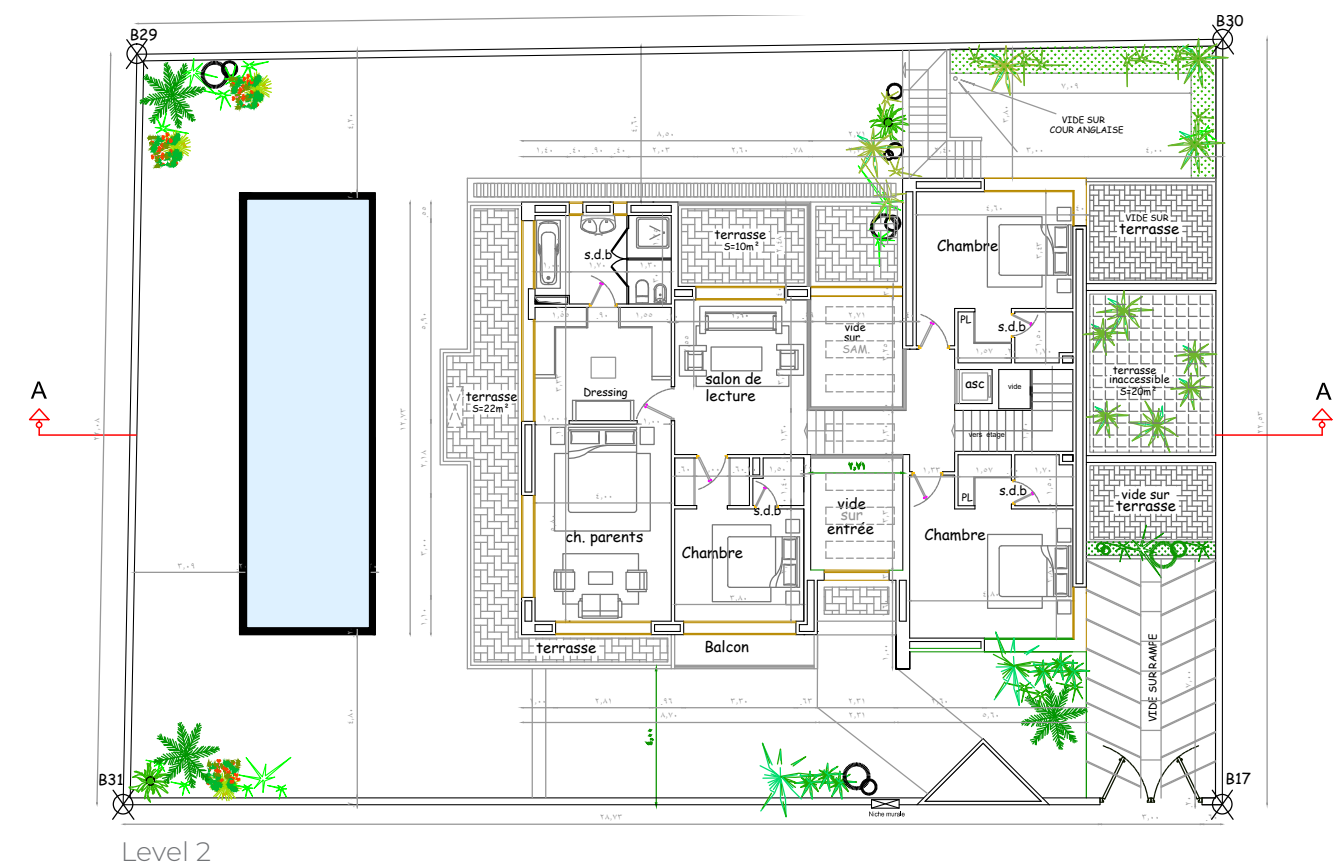
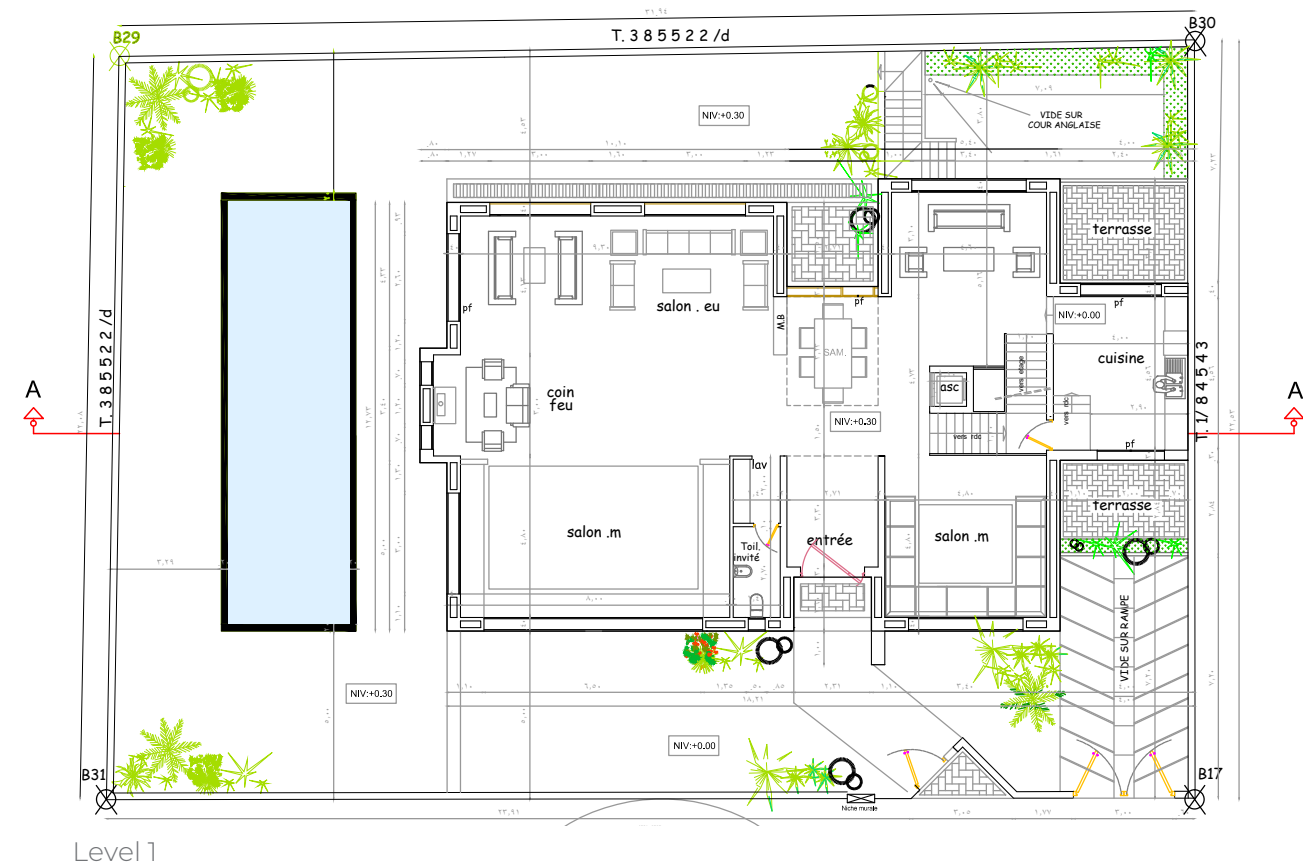
**Firm:** MEA architecture, Rabat, Morocco

**Scope of work:**

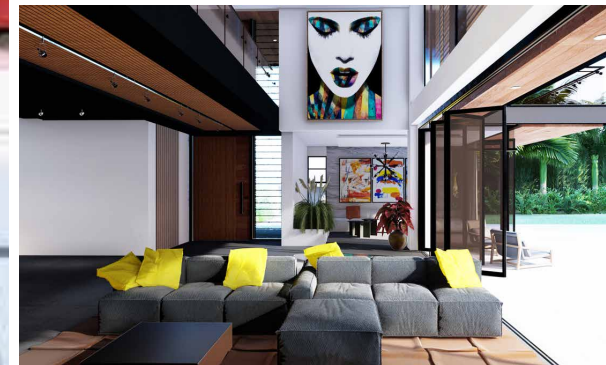
- Schematic design
- Design development
- Working drawing & coordination

As Lead Architect for Sharo House, I managed the entire design and execution process, ensuring a seamless blend of modern minimalism and natural textures. Designed on a 1000m<sup>2</sup> plot in Casablanca, the project focuses on spatial optimization, natural light, and indoor-outdoor harmony. I implemented BIM workflows to enhance coordination and efficiency, optimizing design accuracy and construction timelines. The residence features clean white facades, wooden accents, and expansive glazing, creating a warm, elegant, and functional living space. Through meticulous material selection and strategic layout planning, Sharo House embodies contemporary Moroccan luxury while preserving a strong connection to its natural surroundings.









# THE BLACK PEARL

**Role:** Architect

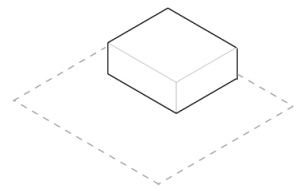
**Firm:** MEA architecture, Rabat, Morocco

**Scope of work:**

- Schematic design
- Design development
- Working drawing & coordination

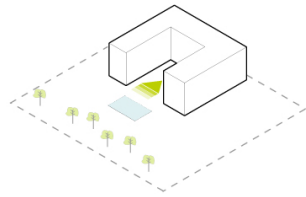
As Lead Architect for The Black Pearl, I managed the design and execution of this modern residence in El Jadida, Morocco, ensuring a balance between aesthetics, functionality, and sustainability. Designed on a 2000m<sup>2</sup> site, the 350m<sup>2</sup> house features clean, expansive shapes and minimalist lines, enhanced by locally sourced materials such as black steel, white marble, and dark walnut wood. To optimize energy efficiency, I integrated large overhangs for passive cooling and natural ventilation strategies, reducing environmental impact while maintaining a refined and contemporary feel. The result is a harmonious and energy-conscious living space that blends modern design with its natural surroundings.





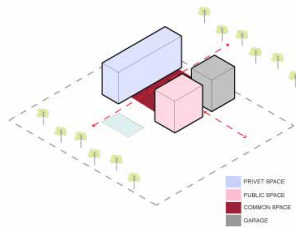
### Starting with Simple Volumes

The design begins with basic geometric forms to establish a clear and strong architectural foundation.



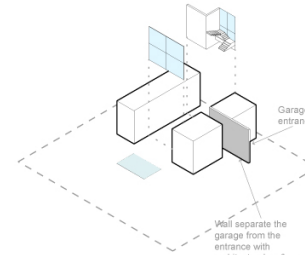
### Opening the Space

We've created expansive openings to foster a robust connection between the interior and the exterior, inviting the views of nature and the pool into the living space.



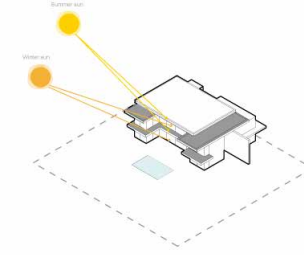
### Zoning of Public and Private Spaces

The house features distinct public and private areas, with a loft-style common space that includes an open kitchen, dining, and living area for a seamless flow of social interaction.



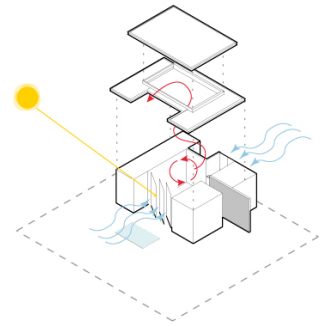
### Glazed Surfaces and Vertical Circulation

Strategically placed glazed surfaces enclose the spaces, offering ample natural light. The vertical circulation is situated at the rear of the house, providing views to the outside and maintaining privacy for the movement between floors.



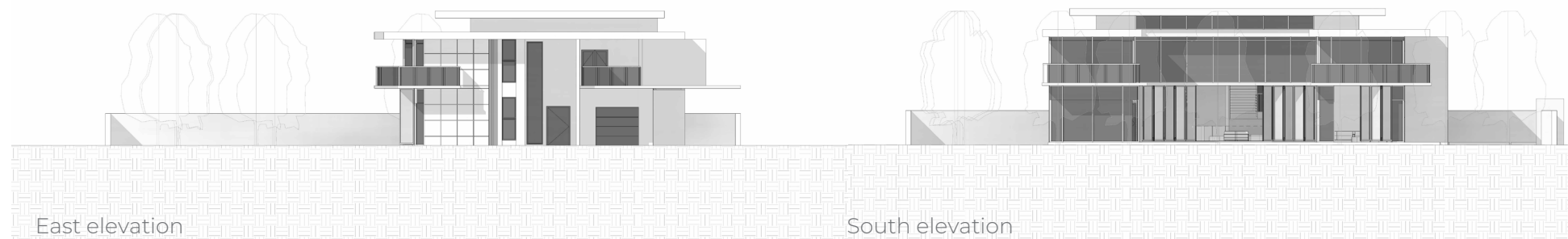
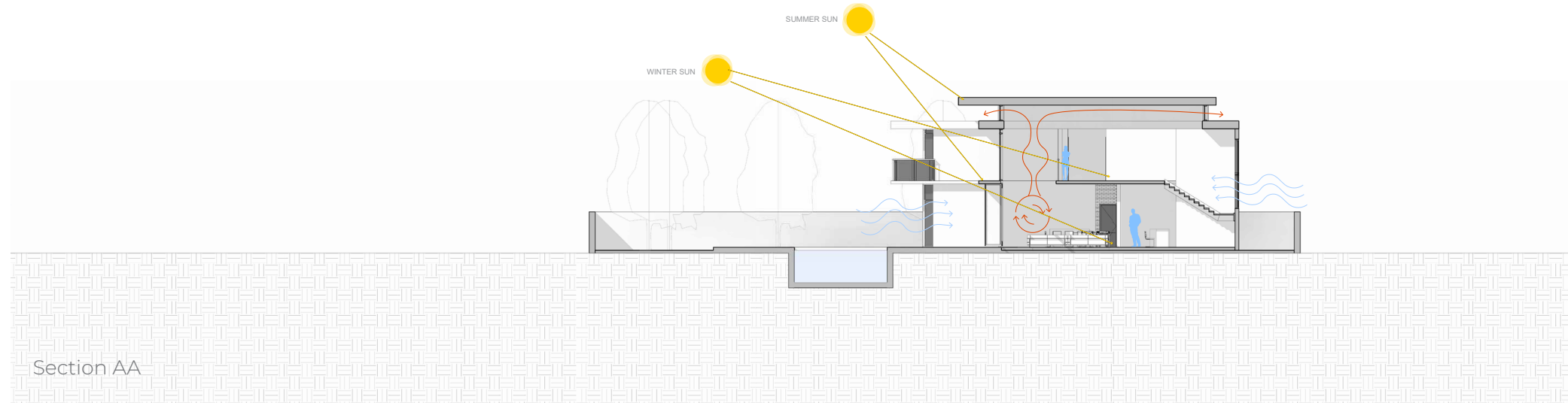
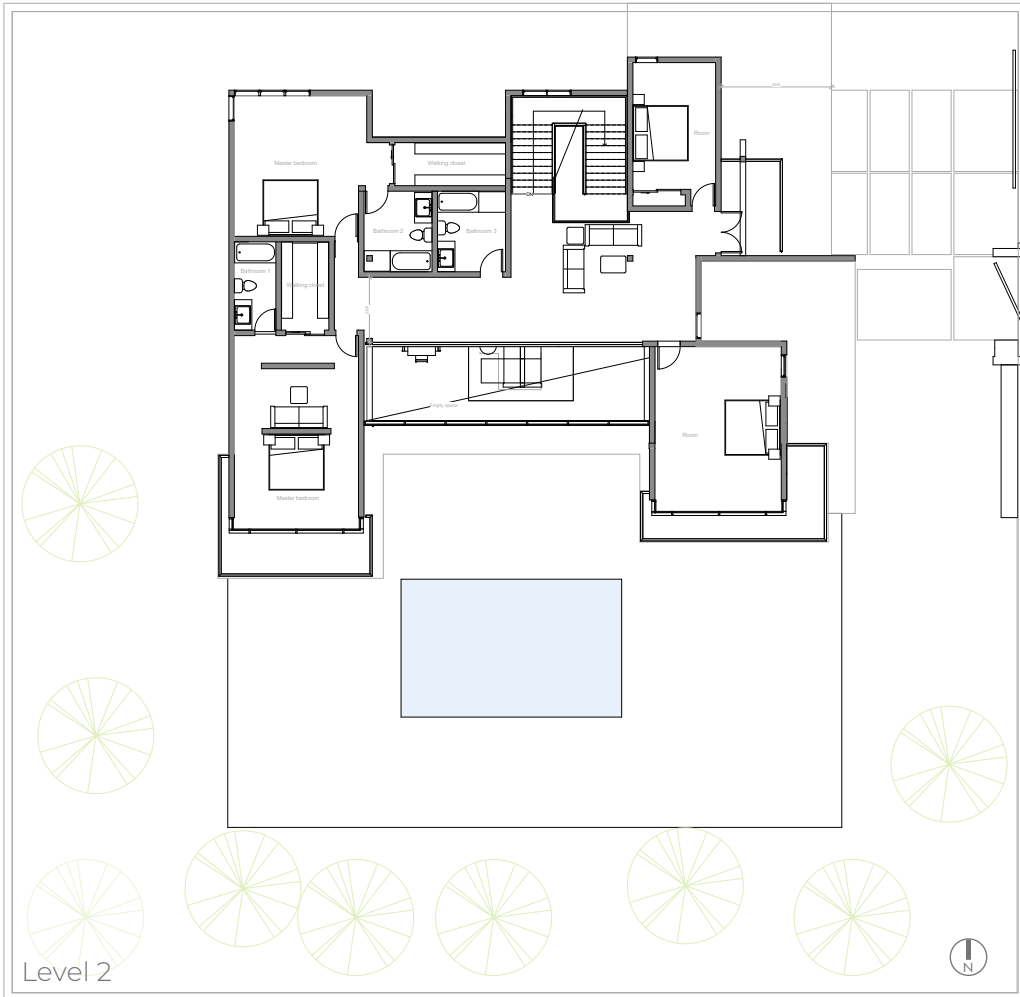
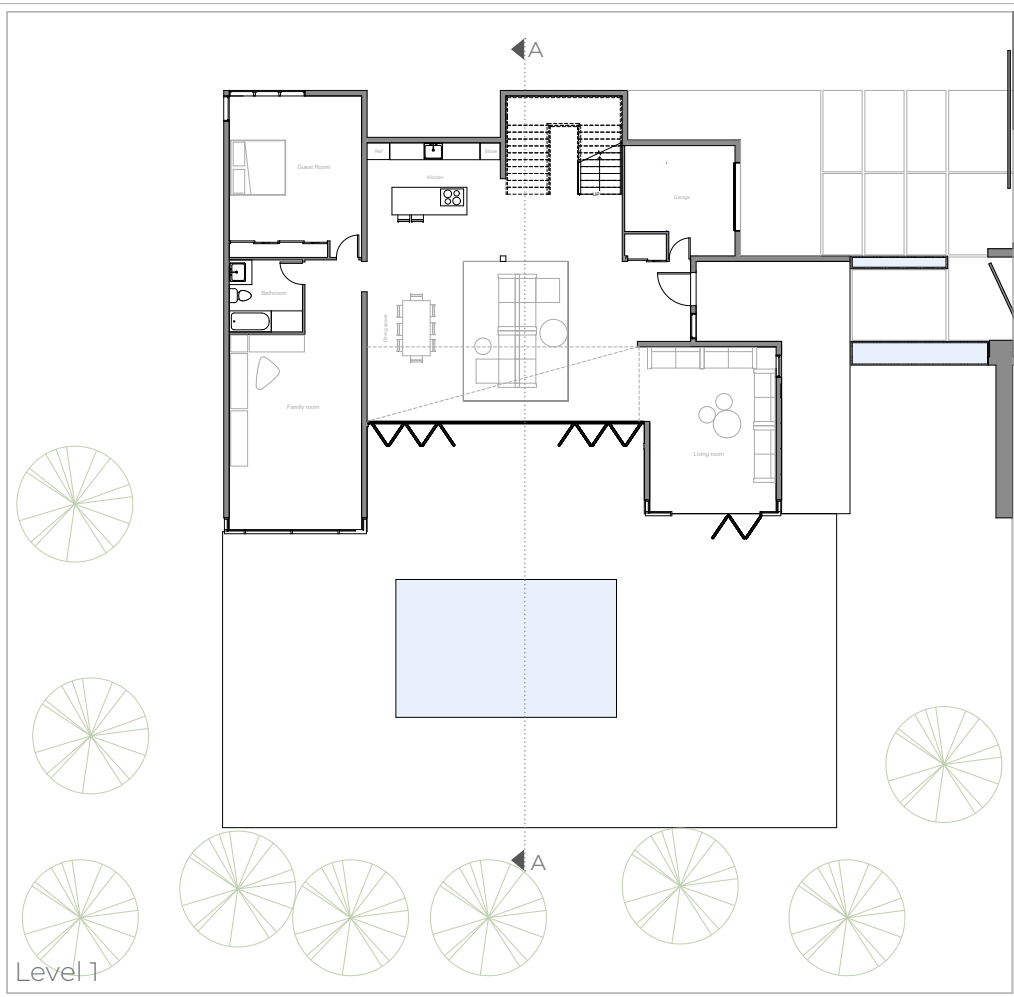
### Sustainability Strategy - Dual-Layered Roofing

The house is topped with two layers of roofing to facilitate natural ventilation through the intermediate space and to enhance the aesthetic appeal of the structure.



### Sustainability Strategy - Natural heating

The roof overhang is used strategically to provide shade from the harsh summer sun while allowing the lower winter sun to warm the living spaces, contributing to the house's passive solar design.





# IC HOUSE

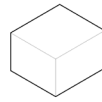
**Role:** Architect  
**Firm:** MEA architecture, Rabat, Morocco  
**Scope of work:**

- Schematic design
- Design development
- Working drawing & coordination

As Lead Architect of the IC House, I led the design and execution of this modern residence in El Jadida, Morocco, ensuring a seamless blend of aesthetics, functionality, and sustainability. The design emphasizes clean geometric forms and natural materials, reflecting the city's architectural identity while enhancing spatial efficiency and energy performance. The house integrates indoor and outdoor living, with large openings maximizing daylight, ventilation, and psychological well-being. The landscape strategy incorporates native plant species requiring low water maintenance, reinforcing the home's sustainable approach and harmonious connection with nature.

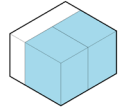






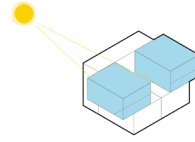
### Fundamental Cube Form

The design originates from a basic cubic form, establishing a solid and elemental architectural presence.



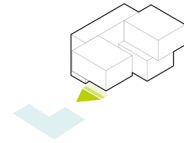
### Spatial Division - Living and Circulation

The cube is partitioned into distinct zones for living spaces and circulation to create a clear organizational layout.



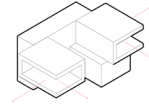
### Upper Volume and Sunlight Control

The upper volume features strategic openings that welcome sunlight while shielding the living room from direct summer sun exposure.



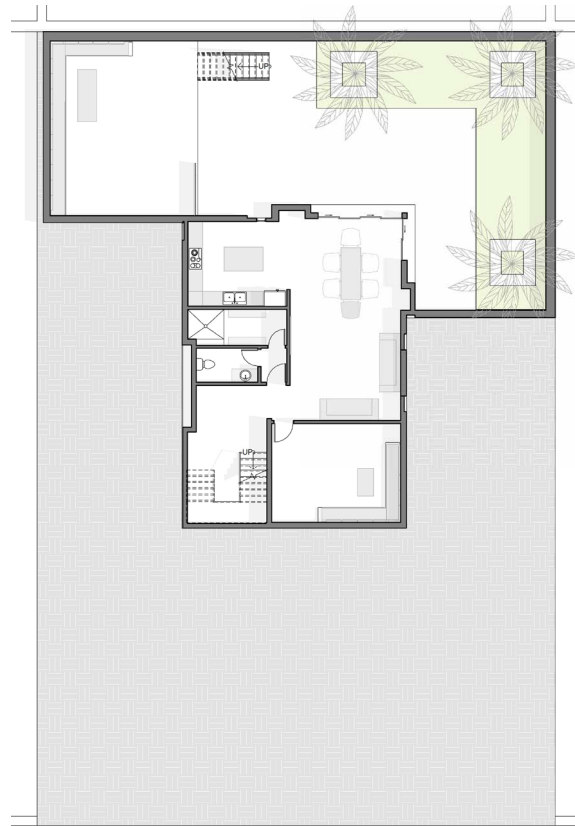
### South Façade and Pool View

On the lower level, the south façade is designed to offer uninterrupted views of the pool, enhancing the connection between indoor and outdoor spaces.

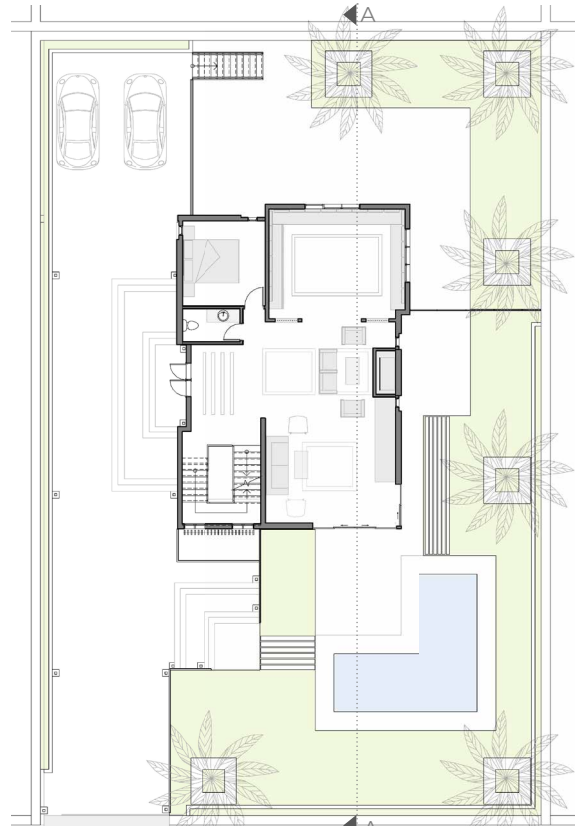


### Maximized Experience with Open Views

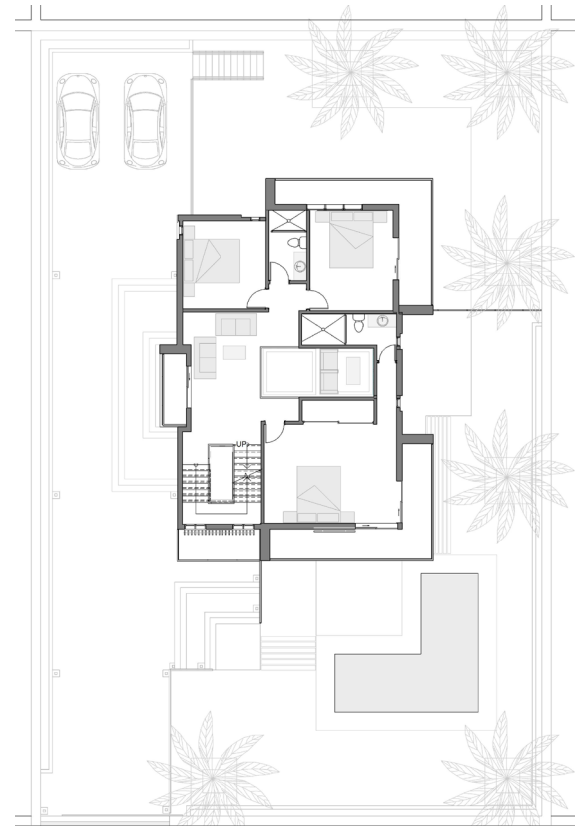
To enrich the living experience, the rooms are designed with open views that capture the mountainous landscape and surrounding nature.



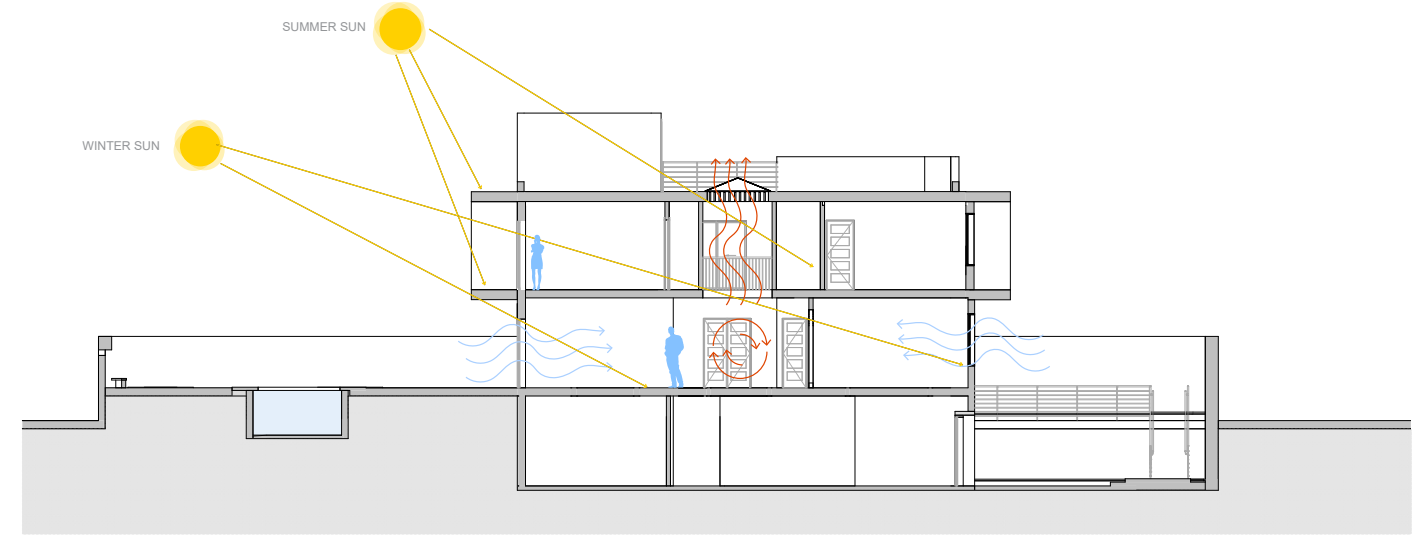
Basment



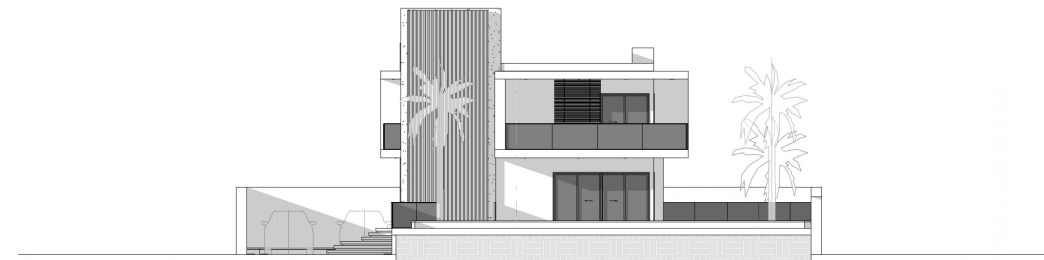
Level 1



Level 2



Section AA



South elevation



East elevation



Constuction site - Contract administration and field review

Our scope of work for this project was to direct the evolution of the building from the initial excavation to the structural framework. We ensured the foundational work was performed to specifications, monitored the adherence of the framework to our architectural plans, and facilitated collaboration among the construction team.



# COMMERCIAL



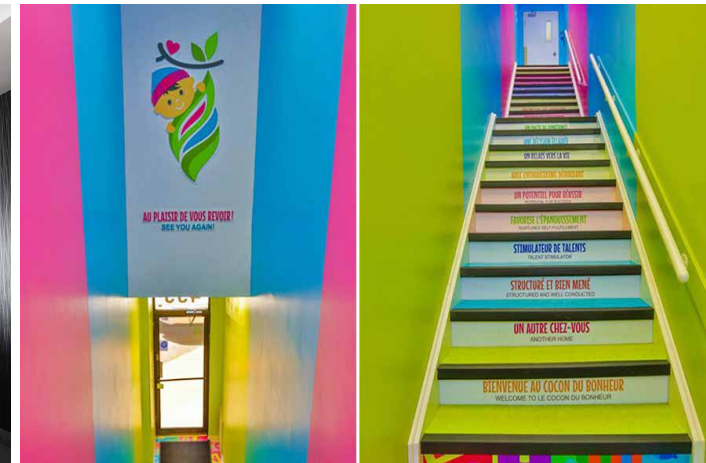
## CITY SNACK RESTAURANT

Rabat, Morocco  
2020



## TAZAJ RESTAURANT

Casablanca, Morocco  
2017



## COCON CHILD CARE

St-austache, Canada  
2015





# CITY SNACK RESTAURANT

**Role:** Architect

**Firm:** MEA Architecture, Rabat, Morocco

**Scope of work:**

- Schematic design
- Design development
- Construction management

The City Snack Restaurant design offers a stylish and contemporary dining experience in the heart of the urban landscape. The interior showcases a harmonious blend of industrial chic and modern comfort, with clean lines and a monochromatic color palette complemented by the warmth of wood and the rustic charm of exposed brick. Overhead, unique lighting fixtures give a soft glow, creating an inviting ambiance that beckons diners to savor the moments as much as the food. The exterior, with its sleek, glass frontage, entices passersby into a space that's not only a place to eat but a destination to enjoy, relax, and socialize.



# TAZAJ RESTAURANT

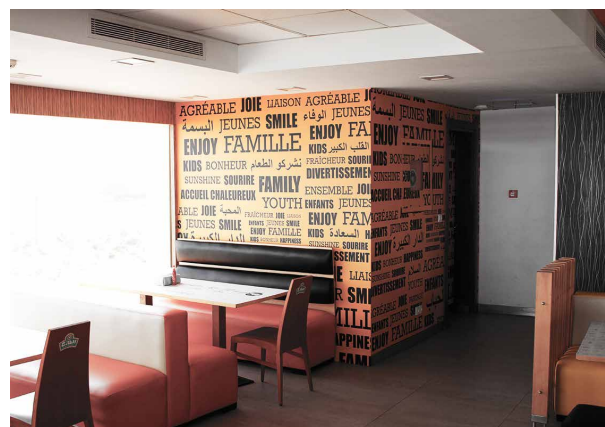
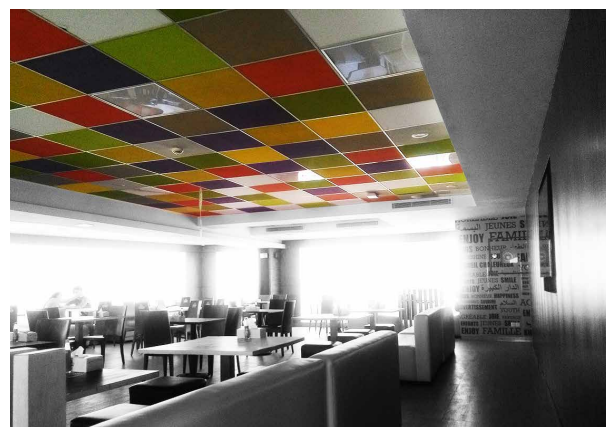
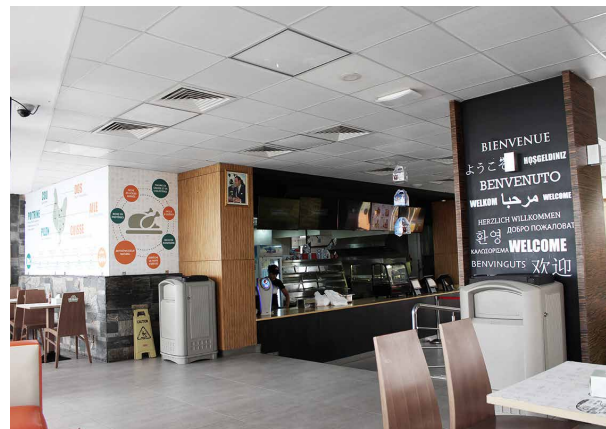
**Role:** Architect

**Firm:** MEA Architecture, Rabat, Morocco

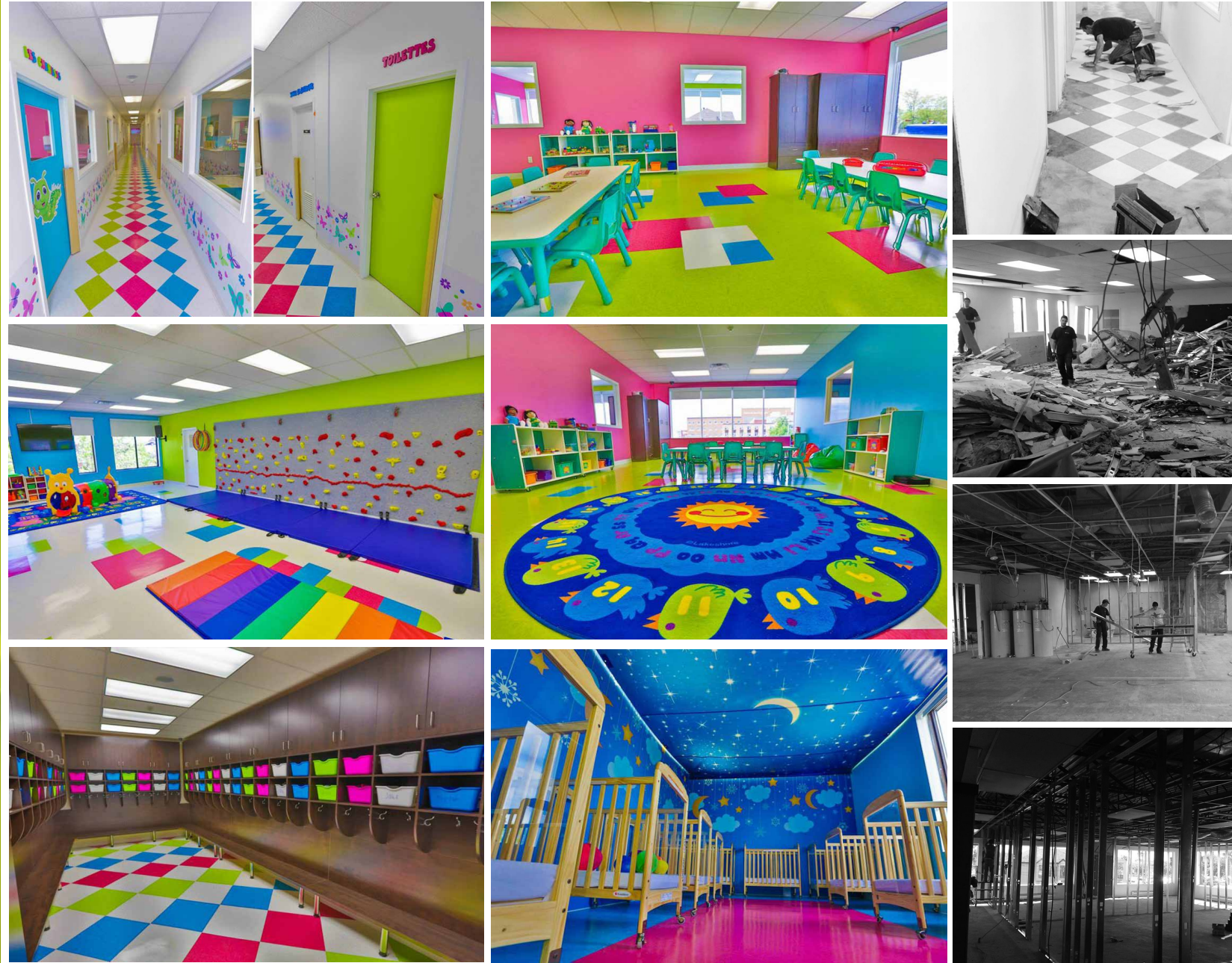
**Scope of work:**

- Schematic design
- Design development
- Construction management

This fast-food restaurant design captivates with its lively blend of urban flair and seaside vibrance. Inside, the playful array of colorful ceiling tiles mirrors the vivid hues of the coastal palette, while the natural wood accents bring the warmth of the beach indoors. The graphic murals on the walls add a dynamic energy reminiscent of the bustling city streets, complemented by the tranquil blues and greens that nod to the nearby sea. The space is designed to create a seamless transition from the rapid pace of city life to the refreshing and serene ambiance of the ocean, making it a unique culinary oasis for locals and visitors alike.







# COCON CHILD CARE

**Role:** Designer

**Firm:** Interconstruction

**Scope of work:**

- Schematic design
- Design development
- Construction management

This project transforms a childcare environment into a vibrant tapestry of learning and play. The design utilizes a kaleidoscope of colors, from the geometric patterns on the floors to the inspirational quotes on the stair risers, each element is crafted to stimulate creativity and curiosity in young minds.

Interactive features, like the wall-mounted play areas and the starry sky ceiling, encourage imaginative exploration, while the thoughtfully arranged classrooms and lockers cater to the practical needs of an educational setting. The transformation from a blank structural canvas to this stimulating educational facility underscores a commitment to fostering a nurturing and dynamic space for children to grow and learn.



# COMPETITION / RESEARCH PROJECTS



## **GREEN DIAMOND**

Master of architecture - University of  
Calgary  
Senior Research Studio  
2014



## **RESTORATIVE REFUGE**

Master of architecture - University of Calgary  
Senior Research Studio  
2014

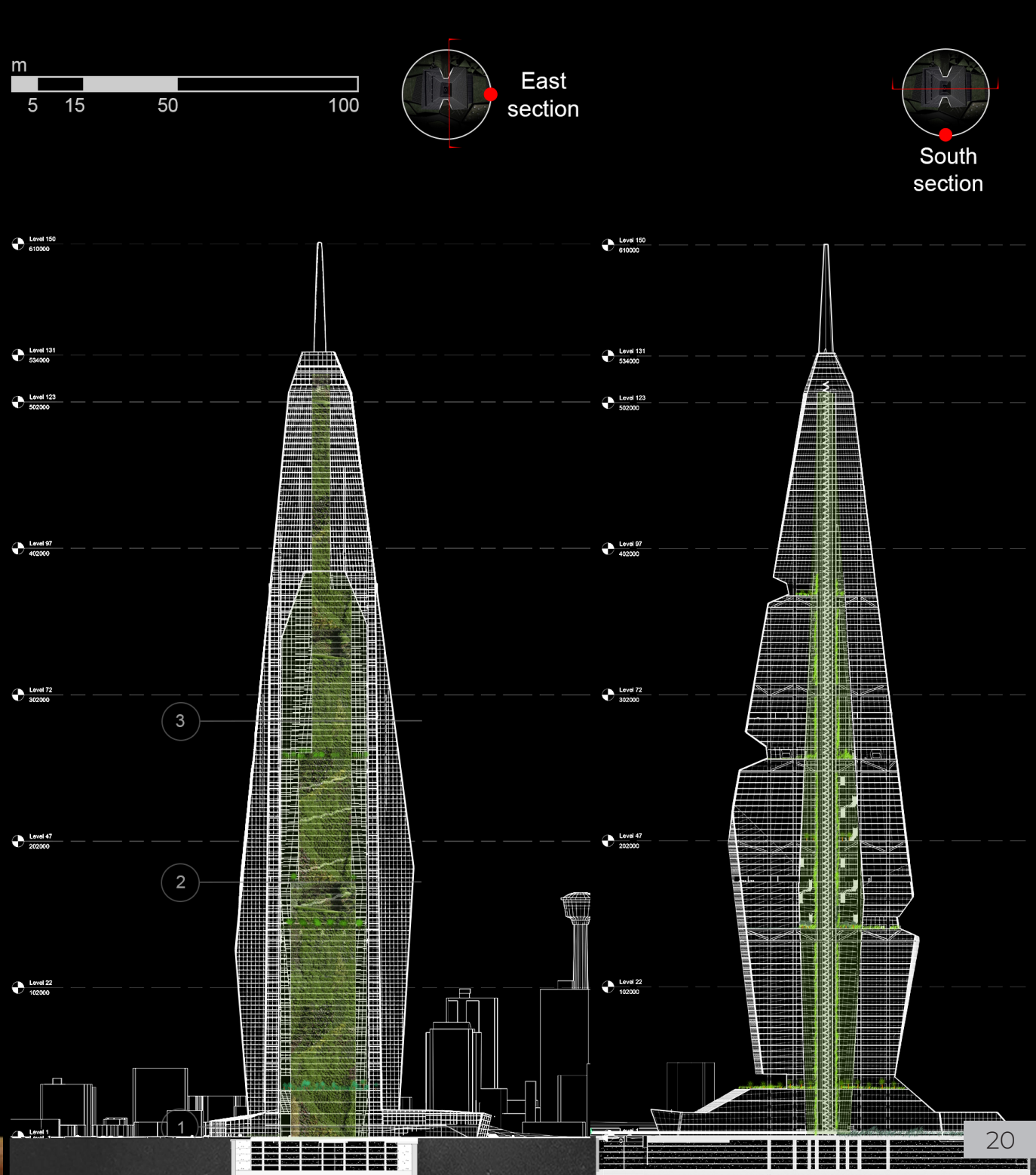
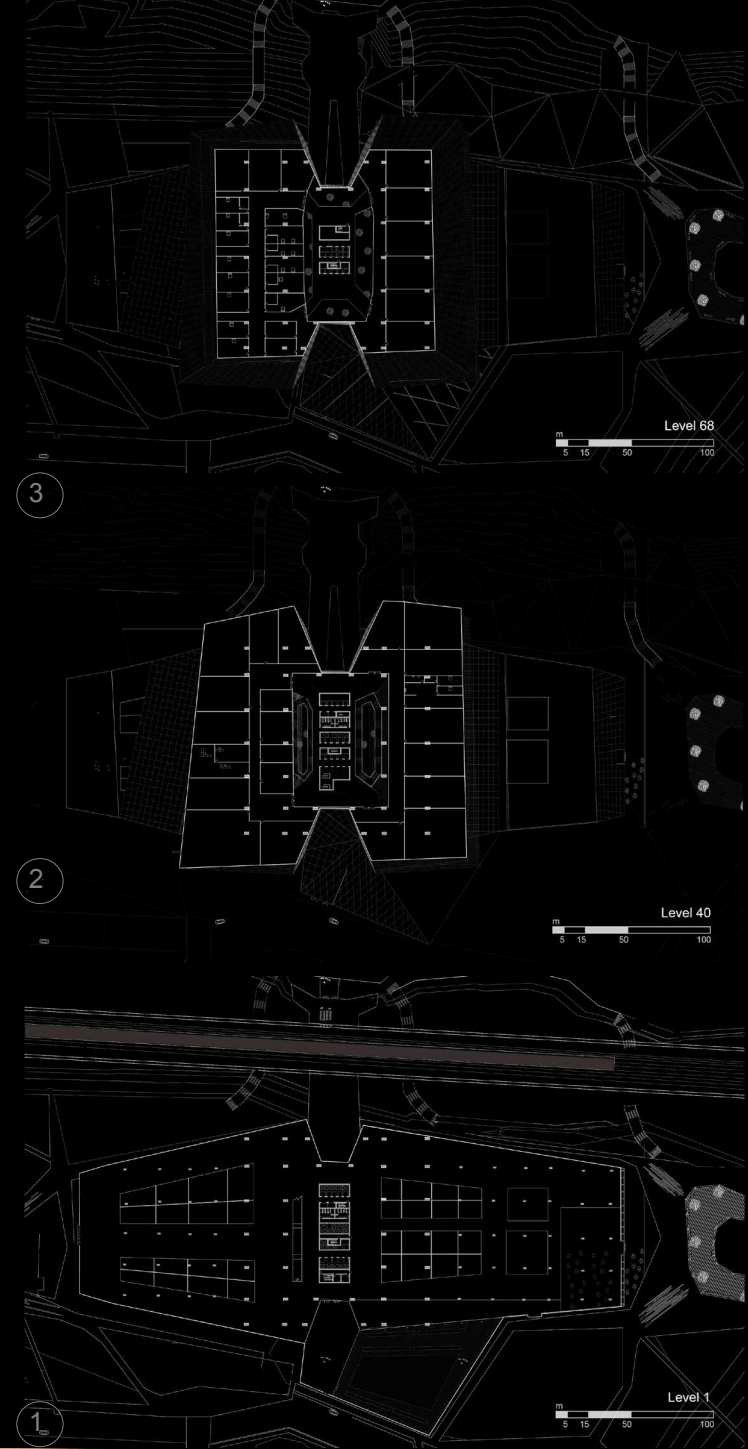




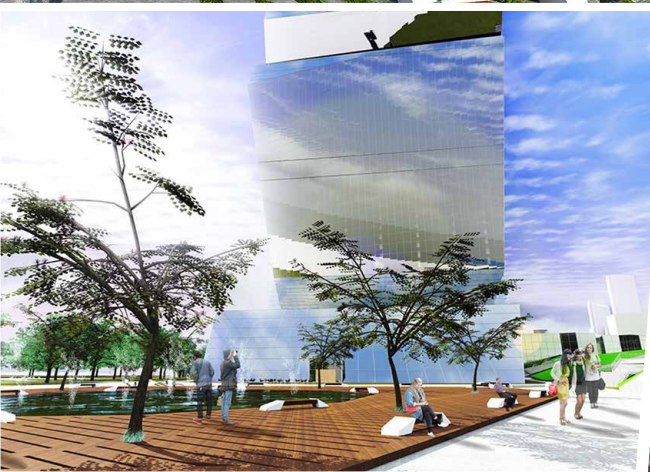
# GREEN DIAMOND

## DESIGN COMPETION - EVOLO

The green diamond is a bold architectural statement rising into the sky, its unique form a landmark in urban innovation. The tower's multifaceted glass façade reflects the changing light of day, embodying the dynamic nature of the city itself. With lush green spaces that cascade down its structure, this building blurs the lines between the natural and the built environment, creating an oasis of tranquility amid the city bustle. The integration of public and private realms within its design invites community interaction and engagement, making it more than just a building—it's a destination. From leisurely afternoons on its terraces to the buzz of activity in its interior atriums, The Crystal Diamond is designed to be as vibrant and multifunctional as the city it resides in.











# THE RESTORATIVE REFUGE

## DESIGN COMPETITION

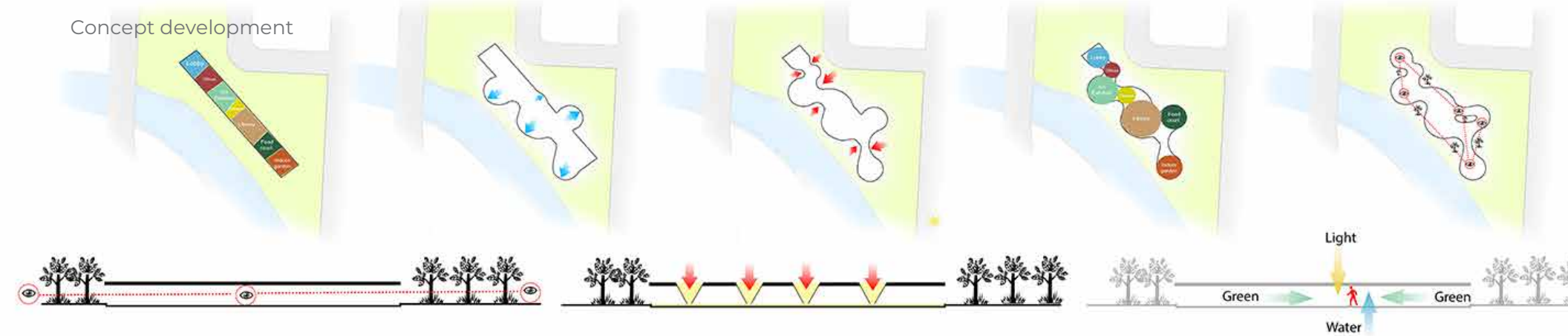
The Restorative Refuge is an architectural project where the principles of psychology and wellness are translated into space. Designed as a public space that merges seamlessly with nature, it offers a sanctuary within the urban landscape. The structure is a testament to contemporary design, blurring the line between the indoors and the outdoors, encouraging occupants to engage with both the built environment and the natural world.

Graceful, tree-like columns rise to support a canopy that filters light, casting organic patterns below, reminiscent of a forest's understory. This environment is envisioned to house a diverse program including an art gallery, library, offices, classrooms, a food court, and an indoor garden, fostering a community centered on growth and well-being.





## Concept development



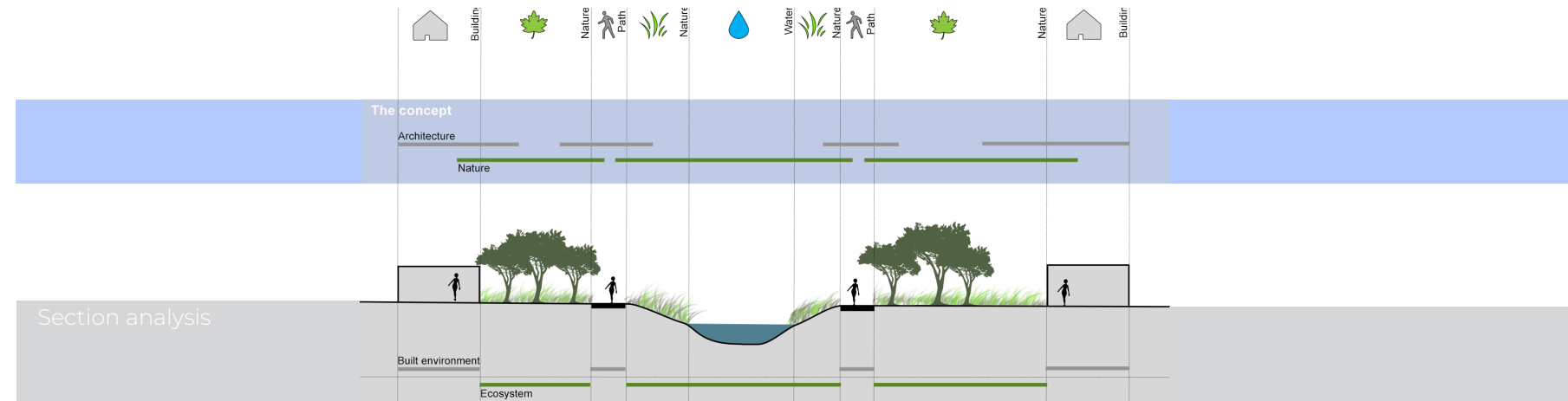
## Sustainability analysis



## Tectonic analysis

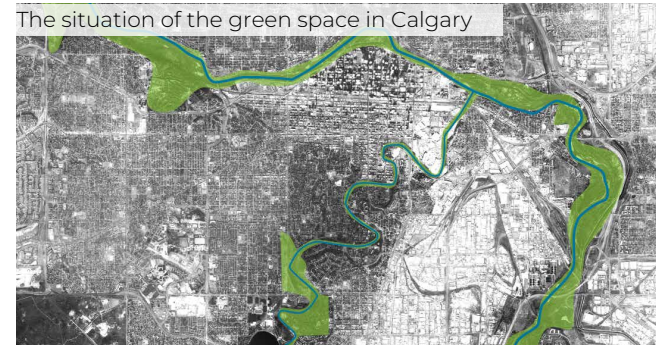


## Section analysis

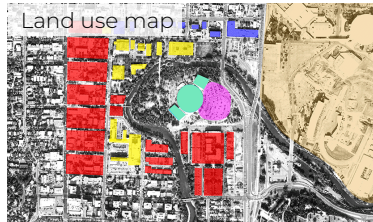


## Mapping

### The situation of the green space in Calgary



### Land use map



### Parkings map



### Circulation map



### Map shows the green space in the site



### Map shows the disconnection that the river and the streets are causing in the site



The situation of nature in Calgary is very unique in terms of its relationship to the city. The river forces the city to keep nature an important interior element by creating a continuity of nature.

## Plan





THANK YOU