

MAHMOUD EL HAJJAJI PORTFOLIO

Architecture - Project management

www.portfolio.moud.ca





MAHMOUD EL HAJJAJI ARCHITECT

Highly creative and experienced architect with over 10 years of experience in the field. Proven track record of designing multi-million dollar projects at lower cost than competitors. Skilled in the use of BIM technology, Revit, AutoCad, SketchUp, and other CAD software, and experienced in digital presentations which have led to a 99% client satisfaction rate.

QUALIFICATIONS

- Innovative architect with a proven track record in problem-solving and collaboration
- Achieved consistent 98% accuracy in project budget delivery, showcasing precision
- Proficient in cutting-edge technologies, including BIM, Revit, AutoCAD, and SketchUp
- Excelled in digital presentations, contributing to a 99% client satisfaction rate
- Fluent in English, French, Arabic, and German, enabling seamless cross-cultural communication

EDUCATION

- Master of architecture, University of Calgary, Calgary 09/2012 to 04/2014
- Bachelor of environmental design, University of Quebec in Montreal, Montreal, 09/2007 to 04/2011

PROFESSIONAL EXPERIENCE

- Intern Architect / Project Lead - RLA Architecture, Ottawa, Canada (August 2021 to April 2024)
- Licenced Architect / Owner - Mahmoud El Hajjaji Architect, Morocco (June 2016 to May 2021)
- Architectural Designer Consultant - Independent Contractor (May 2014 to March 2016)
- Designer - Interconstruction, Montreal, QC (2011 to 2012)

PROJECTS

Residential

- Metcalf multiunit high rise building - Ottawa (2022 - 2024)
- Laurier multiunit high rise building - Ottawa (2022 - 2024)
- Queen multiunit high rise building - Kingston (2021 - 2022)
- SHARO HOUSE - Casablanca (2019): Architecture
- BLACK PEARL HOUSE - El Jadid (2018): Architecture
- IC HOUSE - El Jadida (2016): Architecture

Commercial

- CITY SNACK RESTAURANT - Rabat (2020): Interior design, fit-up, architecture, contract administration
- TAZAJ RESTAURANT - Casablanca (2018): Interior design, fit-up, contract administration
- COCON CHILD CARE - Montreal (2015): Interior design, fit-up, architecture, contract administration

Research

- GREEN DIAMOND - Research project - Evolo competition 2014
- RESTORATIVE REFUGE - Research project 2014

RESIDENTIAL



LAURIER
Ottawa, Canada
2022 - 2024



METCALF
Ottawa, Canada
2022 - 2024



QUEEN BUILDING
Kingston, Canada
2021 - 2022



SHARO HOUSE
Casablanca, Morocco
2019



BLACK PEARL
El Jadida, Morocco
2018



IC HOUSE
El jadida, Morocco
2016

METCALF

Role: Architect - Project lead

Firm: RLA Architecture, Ottawa, Canada

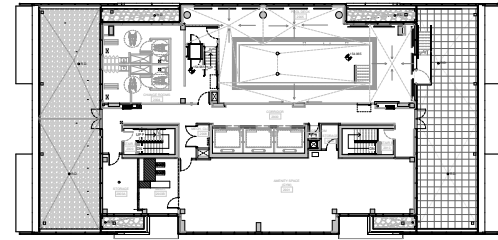
Scope of work:

- Schematic design
- Design development
- Working drawing & coordination

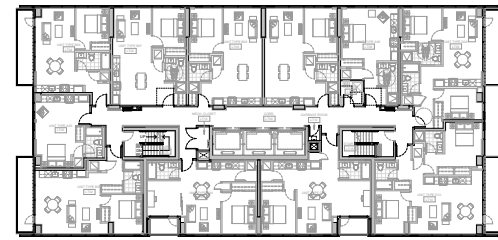
This project presents a captivating high-rise that marries the historical beauty of its original façade with the clean lines of contemporary design. The base of the building retains the classic brickwork and grand arched windows, a nod to the site's historical significance, creating an inviting entrance that reflects the city's architectural heritage. Above this, a modern tower rises, clad in glass and steel, its reflective surfaces capturing the shifting skies, providing residents with a canvas of the city's evolving moods.

Each apartment boasts expansive windows that stretch from floor to ceiling, offering panoramic views of the urban landscape and flooding the interiors with natural light, enhancing the energy efficiency of each home. This building stands as a harmonious addition to the cityscape, providing a luxurious, comfortable living space that respects its historical context.





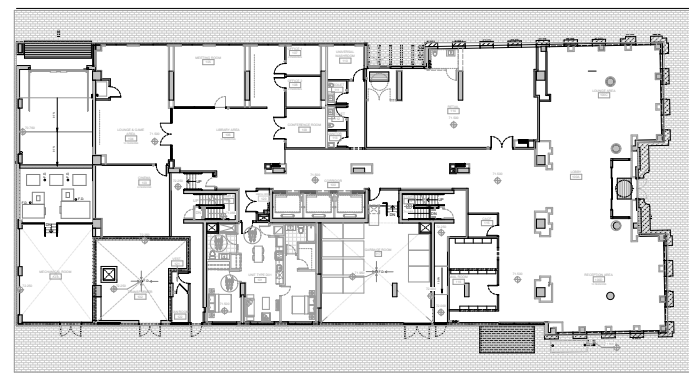
Penthouse



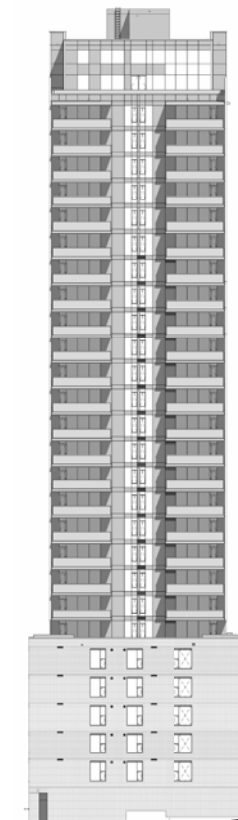
Level 7th to 29th



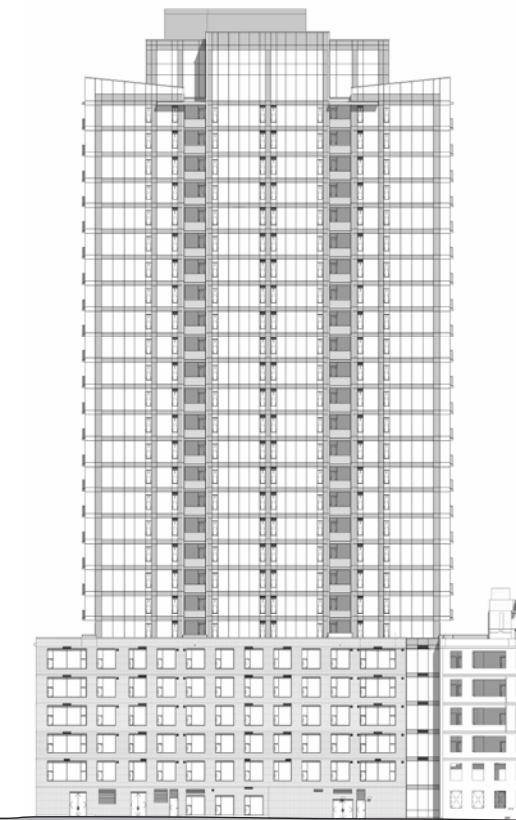
Level 2nd to 6th



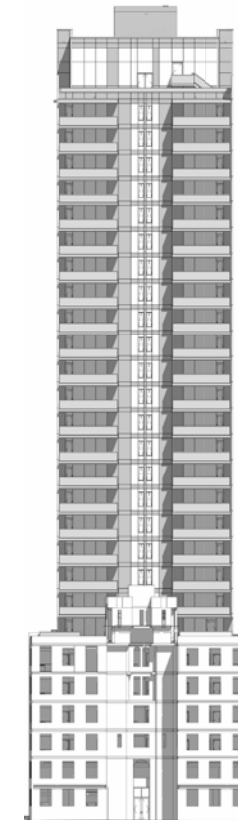
Ground floor



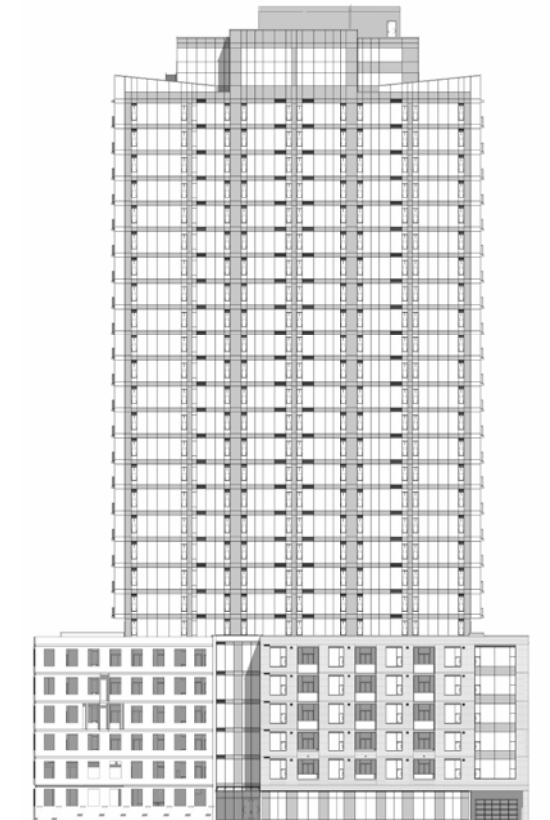
West elevation



South elevation



East elevation



North elevation



LAURIER

Role: Architect - Project lead

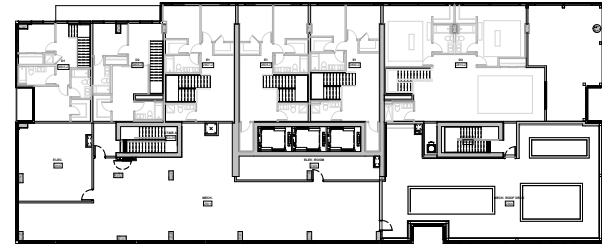
Firm: RLA Architecture, Ottawa, Canada

Scope of work:

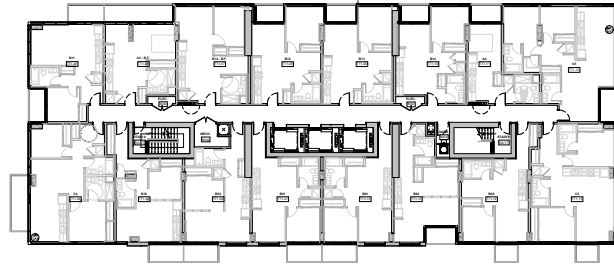
- Schematic design
- Design development
- Working drawing & coordination

This innovative 27 storey mixed-use apartment building project stands at the intersection of Laurier Avenue and Elgin Street, a prominent location within the capital's context. It marries elegance with functional design, featuring a vertical reveal on the east façade that nods to the adjacent church spire, creating a dynamic interaction with the heritage site. The varying heights of the podium and the strategic use of a curtain wall system enhance the building's aesthetic and relationship with the urban streetscape.

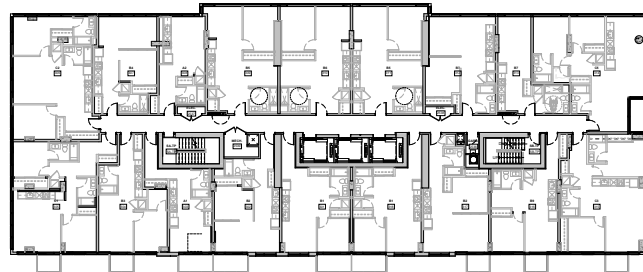
Incorporating feedback from expert panels, the design aims for a delicate balance with the historical church, suggesting a reevaluation of the podium's materiality, potentially employing stone to complement the church's significance. Sustainability measures aim to improve energy efficiency alongside thoughtful landscaping and site planning, promise a sustainable and engaging addition to the city's skyline.



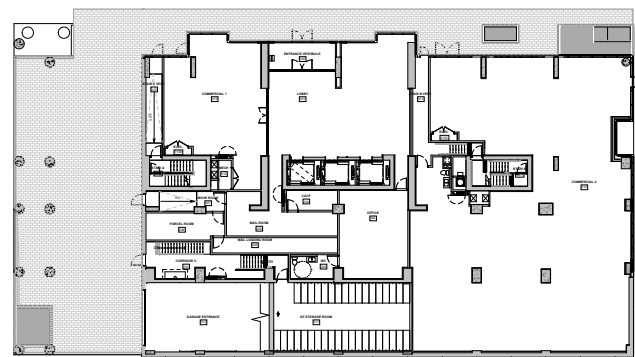
Level 29th



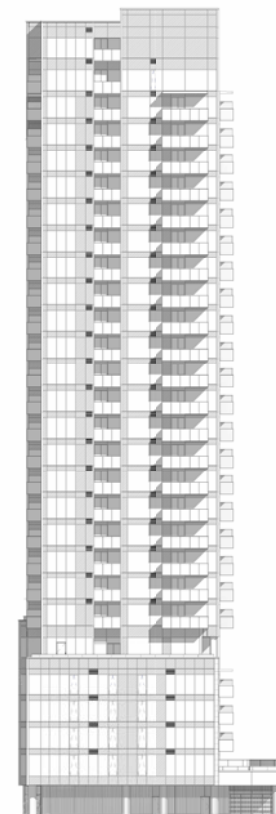
Level 8th to 25th



Level 3rd to 5th



Ground floor



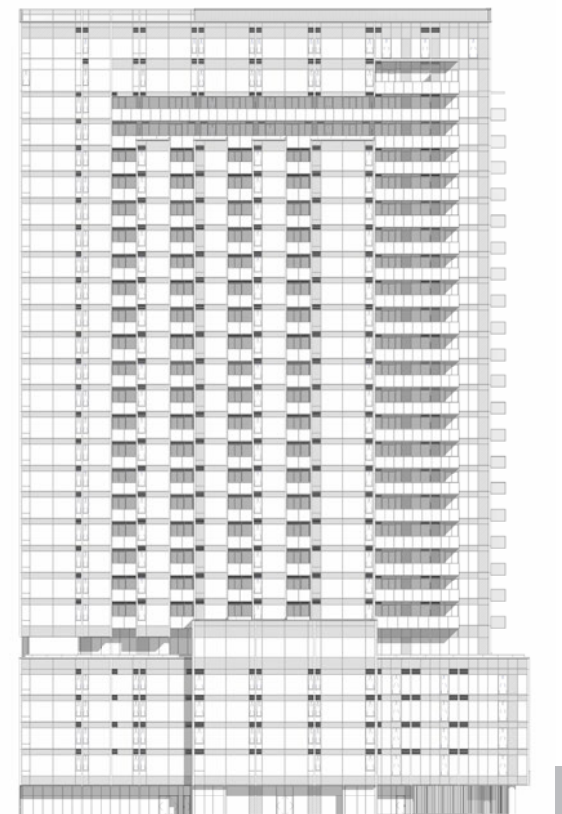
West elevation



South elevation



East elevation



North elevation

QUEEN

Role: Architect - Project lead

Firm: RLA Architecture, Ottawa, Canada

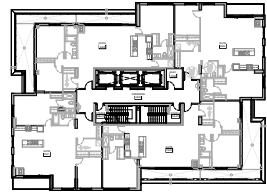
Scope of work:

- Schematic design
- Design development
- Working drawing & coordination

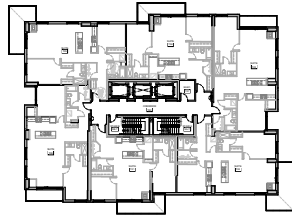
This architectural project is a sophisticated high-rise that beautifully integrates into the urban fabric, reflecting a modern rejuvenation of the city's skyline. Grounded by a historic façade that preserves the neighborhood's character, the building rises with a contemporary expression, featuring clean lines and a modern palette of materials. The design includes generous windows and balconies that provide residents with sweeping urban vistas and ample natural light.

At street level, thoughtfully landscaped outdoor spaces and pedestrian-friendly areas invite community engagement and contribute to the vibrant street life. The building's ground floor, potentially hosting retail or dining establishments, adds to the liveliness, creating a hub where commerce and community intersect.

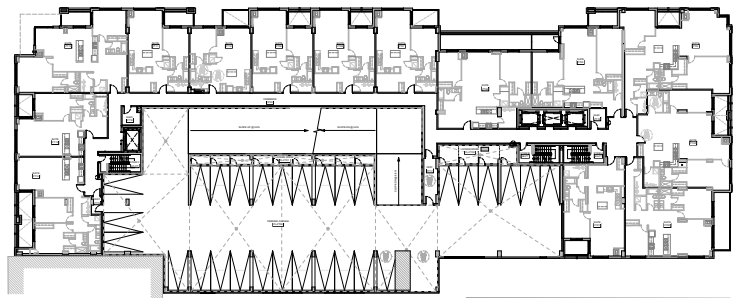




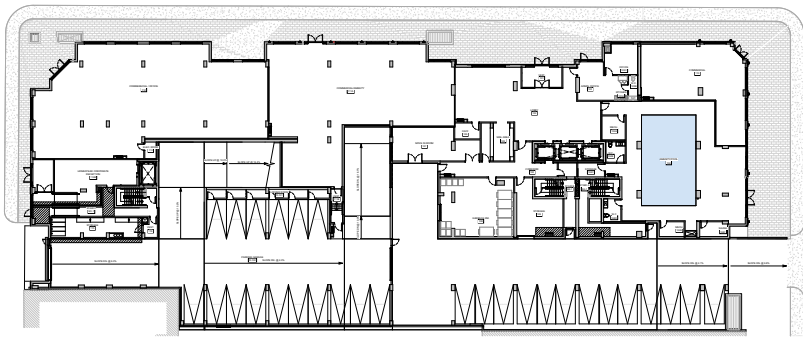
Level 24th



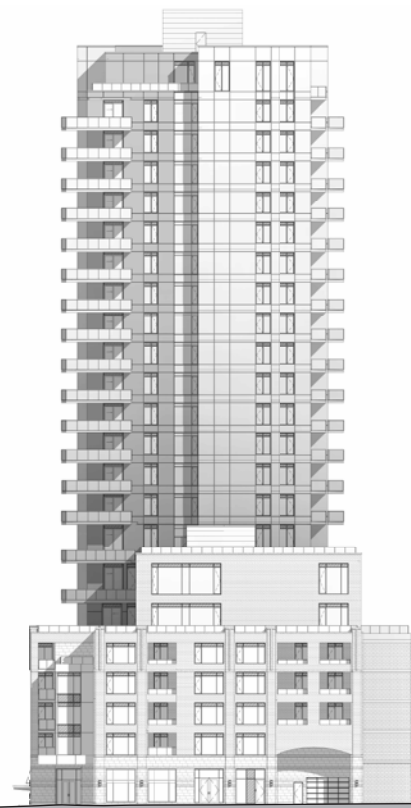
Typical tower - Level 8nd to 22th



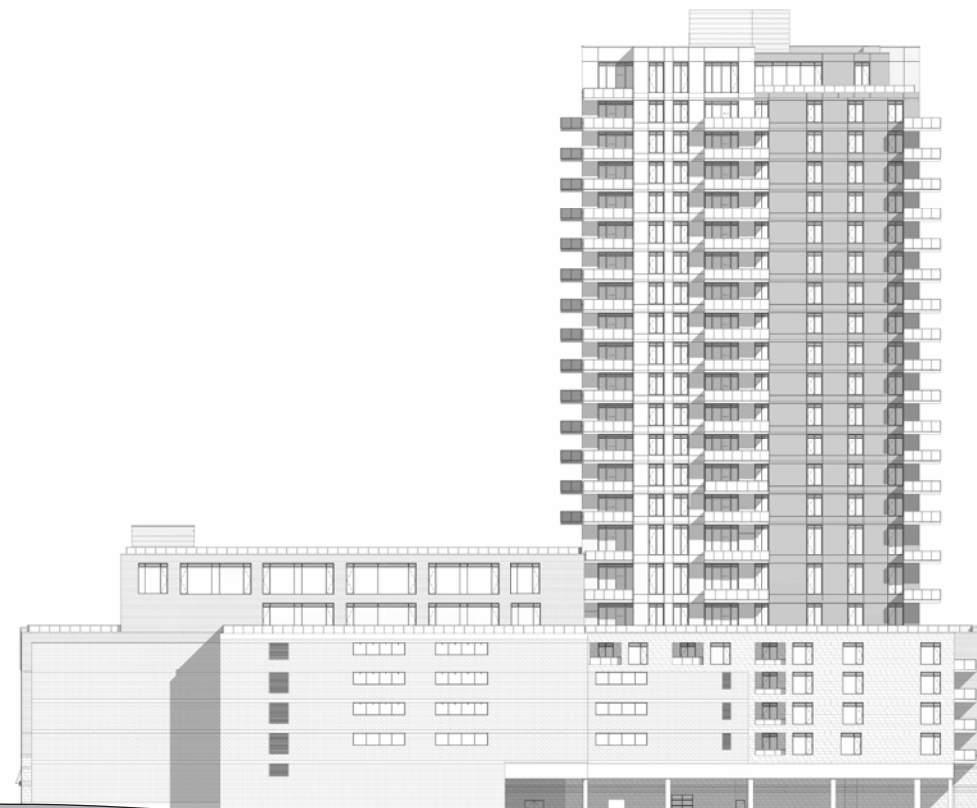
Typical podium - Level 2nd to 5th



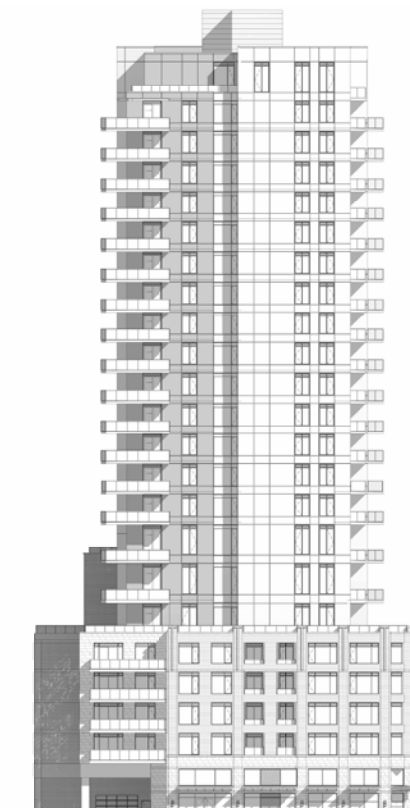
Ground floor



West elevation



South elevation



East elevation



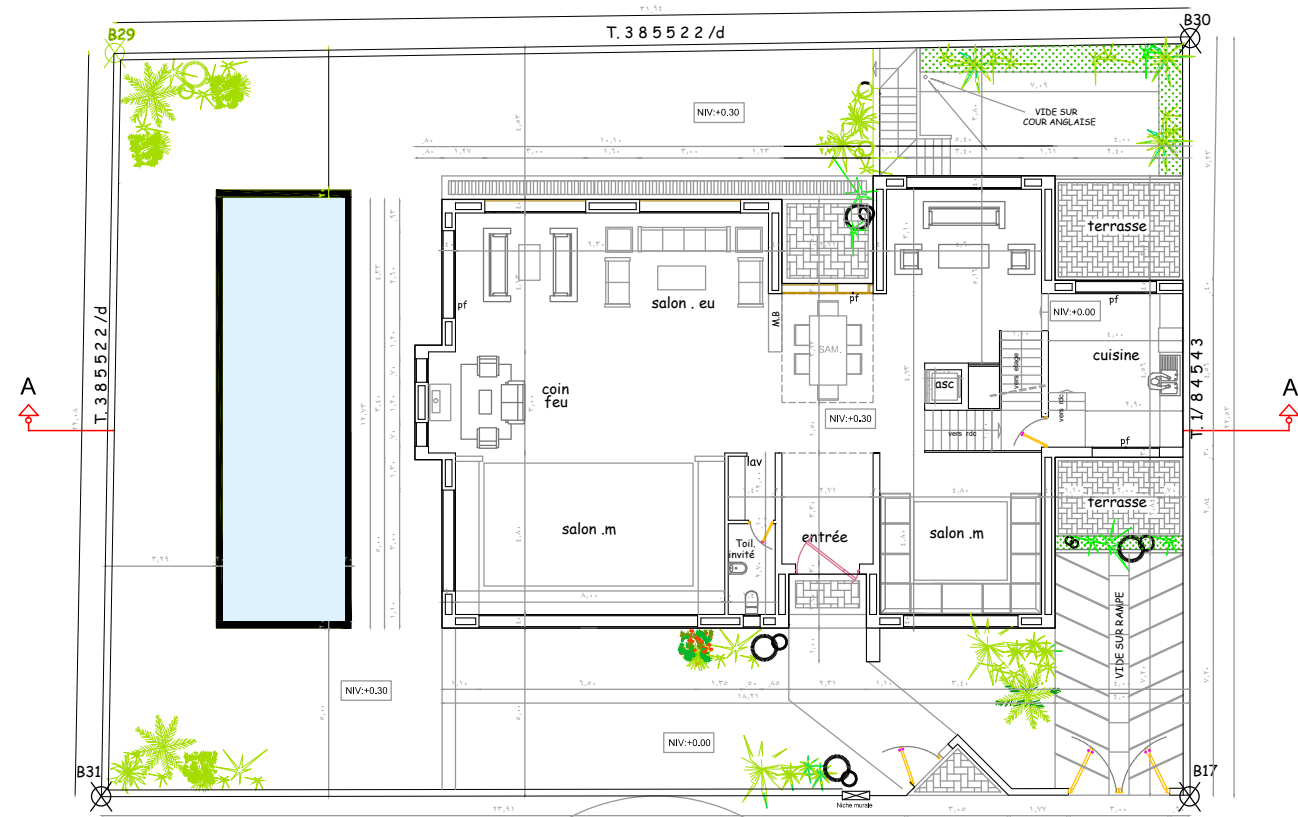
North elevation



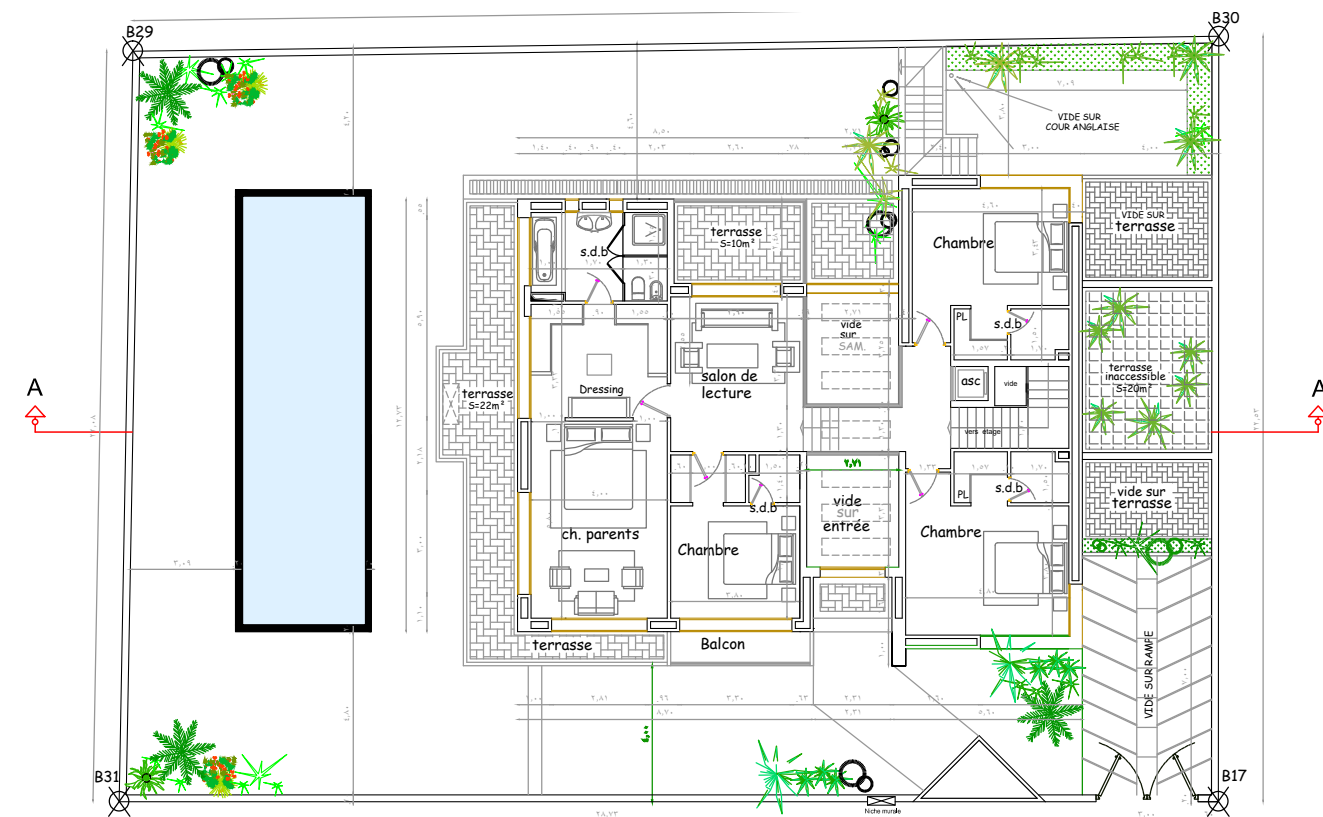
SHARO HOUSE

- Role:** Architect
Firm: MEA architecture, Rabat, Morocco
Scope of work:
- Schematic design
 - Design development
 - Working drawing & coordination

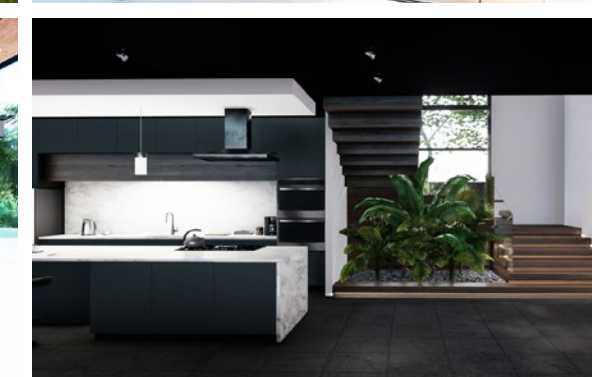
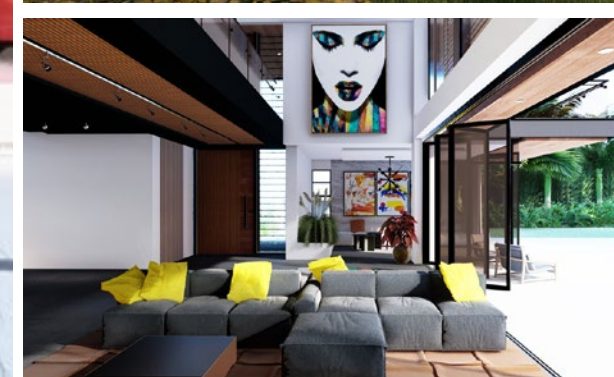
Nestled in the heart of Casablanca on a generous 1000m² plot, the Sharo House stands as a modern architectural statement, blending clean, contemporary lines with warm, natural elements. The residence is designed with a minimalist aesthetic, where white facades contrast with rich wooden accents and stone textures, creating an inviting and balanced exterior. Large windows punctuate the structure, offering ample natural light and a seamless connection to the lush outdoor spaces. The Sharo House is not just a dwelling but a celebration of modern living, providing a serene retreat within the vibrant energy of Casablanca.



Level 1



Level 2



THE BLACK PEARL

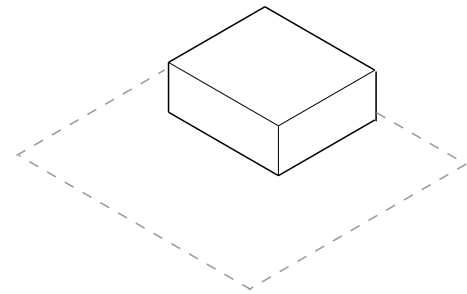
Role: Architect

Firm: MEA architecture, Rabat, Morocco

Scope of work:

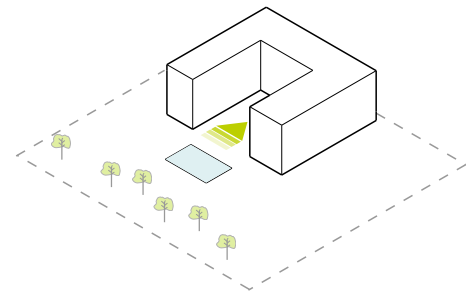
- Schematic design
- Design development
- Working drawing & coordination

The Black Pearl is a distinctive house located in El Jadida, Morocco, spanning 350 m² with a land size of 2000 m². The primary concept focused on creating expansive shapes and straight lines, epitomizing the clean and minimalist style. The extensive roof overhangs are strategically designed to shield the house from direct summer sun exposure, incorporating a sustainable strategy to enhance the home's energy efficiency by naturally reducing cooling needs. Materials such as black steel, white marble, and dark walnut have been meticulously selected to create a striking contrast, further accentuating its minimalist aesthetic. Additionally, the design incorporates sustainable features such as natural ventilation and the use of locally sourced materials to minimize the environmental impact and ensure the house remains in harmony with its picturesque surroundings.



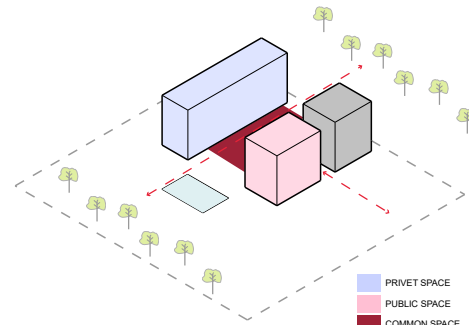
Starting with Simple Volumes

The design begins with basic geometric forms to establish a clear and strong architectural foundation.



Opening the Space

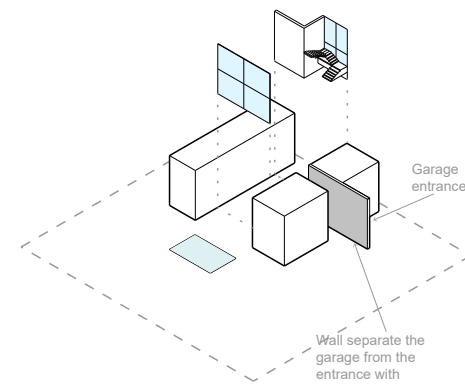
We've created expansive openings to foster a robust connection between the interior and the exterior, inviting the views of nature and the pool into the living space.



Zoning of Public and Private Spaces

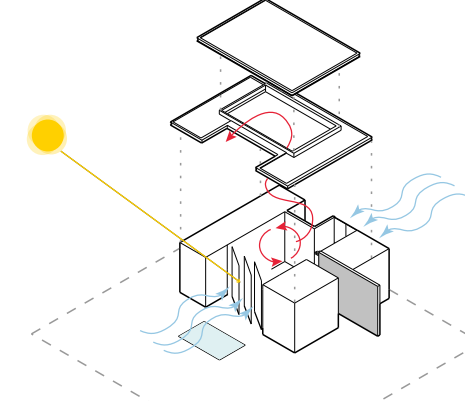
The house features distinct public and private areas, with a loft-style common space that includes an open kitchen, dining, and living area for a seamless flow of social interaction.

- PRIVET SPACE
- PUBLIC SPACE
- COMMON SPACE
- GARAGE



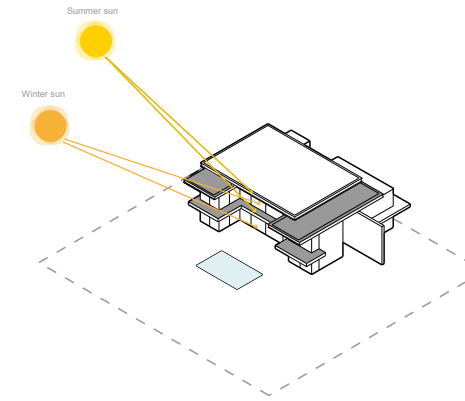
Glazed Surfaces and Vertical Circulation

Strategically placed glazed surfaces enclose the spaces, offering ample natural light. The vertical circulation is situated at the rear of the house, providing views to the outside and maintaining privacy for the movement between floors.



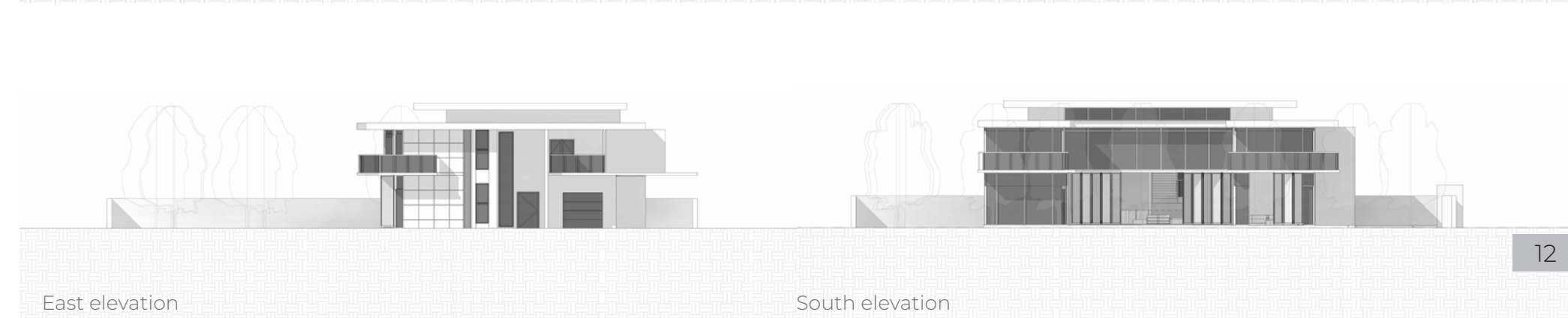
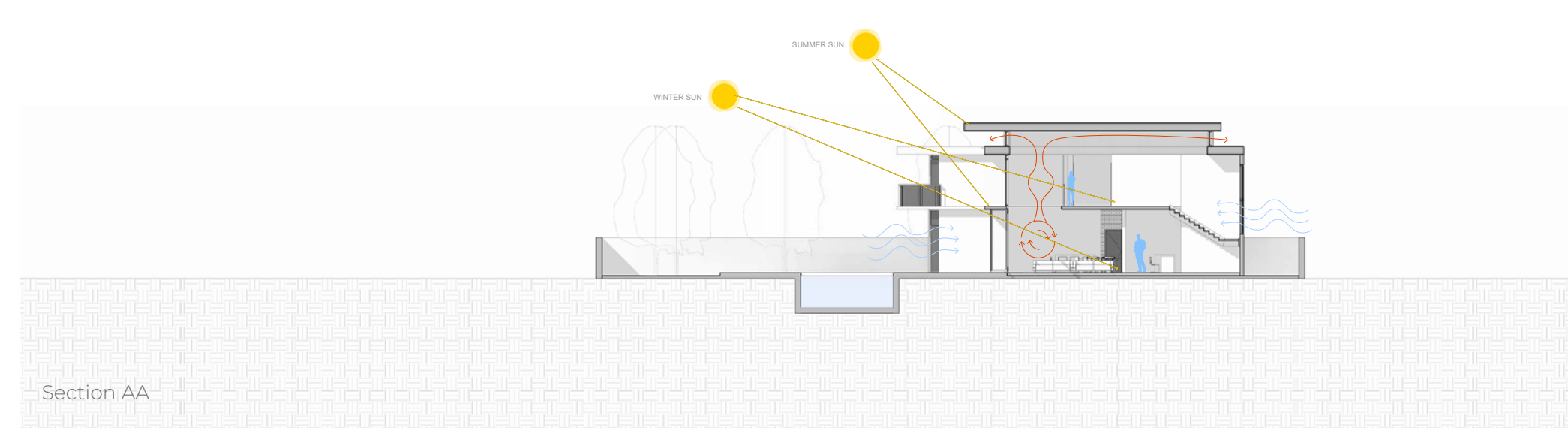
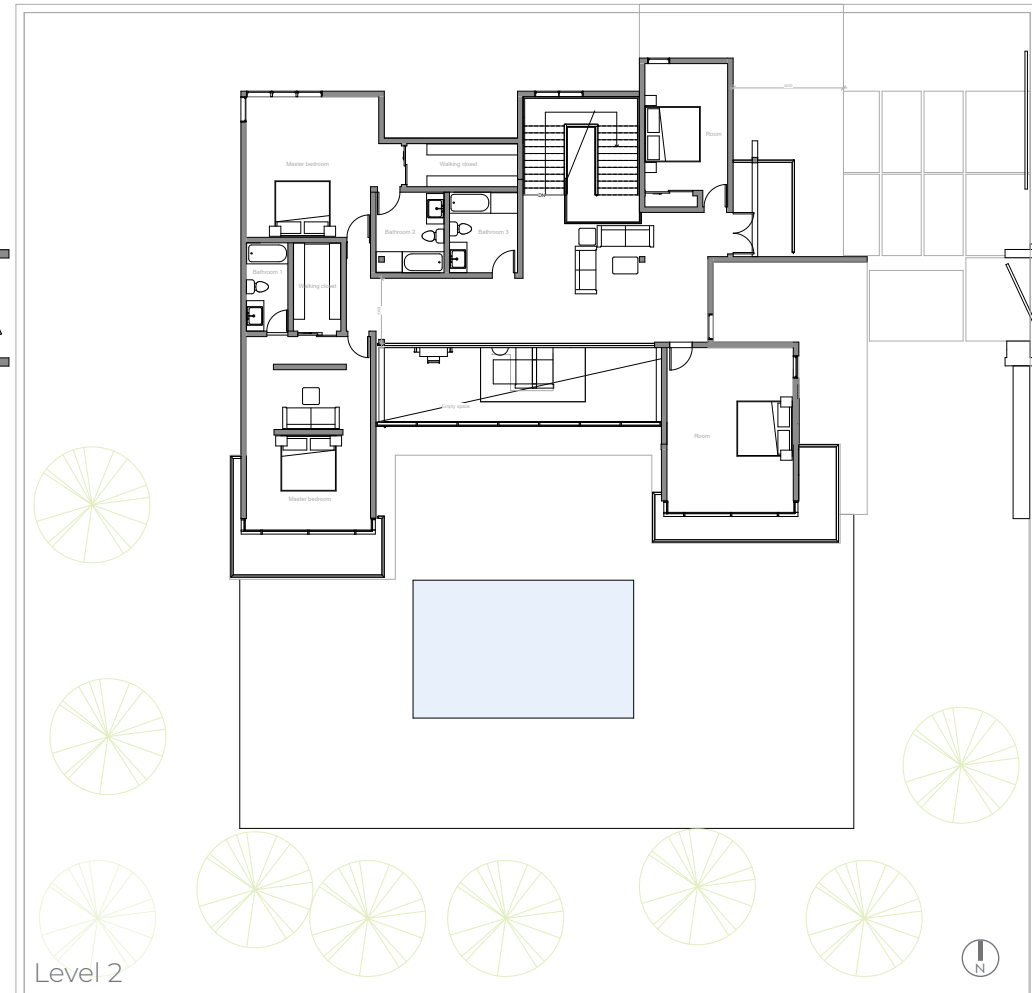
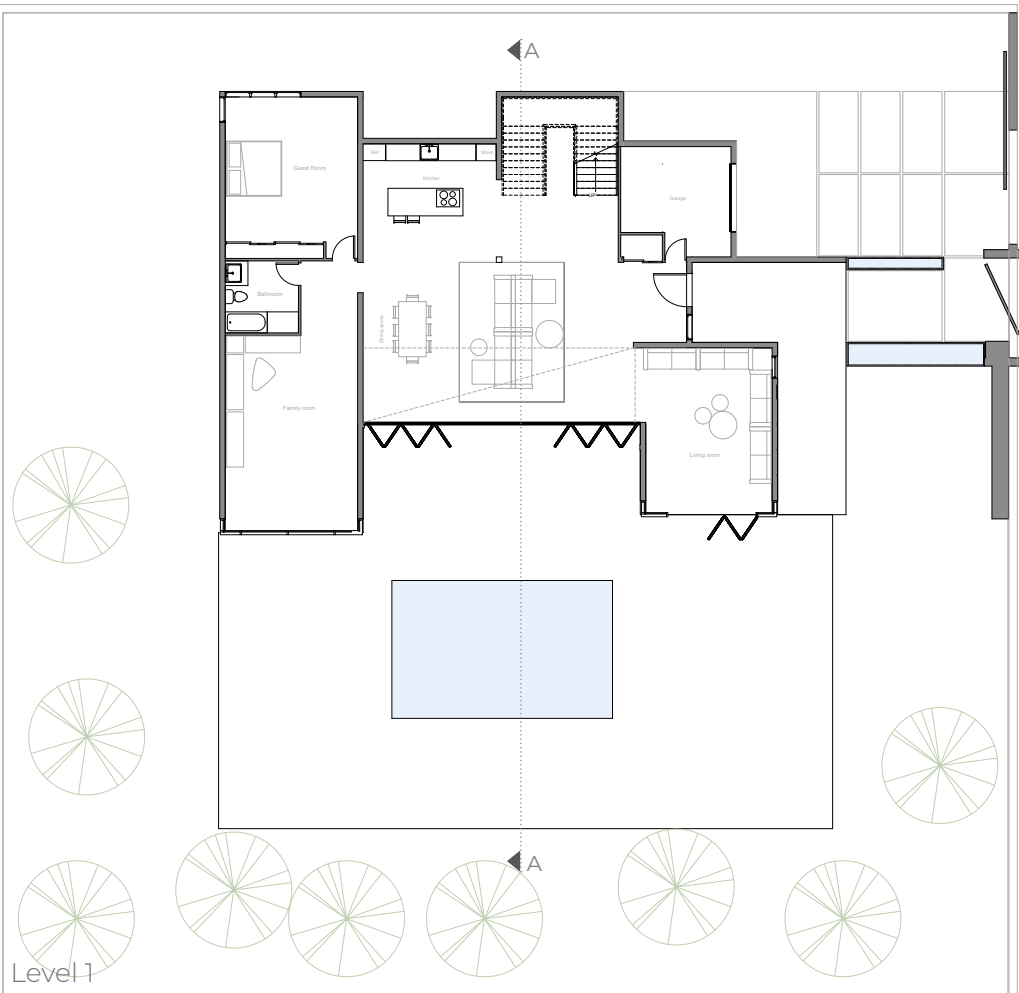
Sustainability Strategy - Dual-Layered Roofing

The house is topped with two layers of roofing to facilitate natural ventilation through the intermediate space and to enhance the aesthetic appeal of the structure.



Sustainability Strategy - Natural heating

The roof overhang is used strategically to provide shade from the harsh summer sun while allowing the lower winter sun to warm the living spaces, contributing to the house's passive solar design.



IC HOUSE

Role: Architect

Firm: MEA architecture, Rabat, Morocco

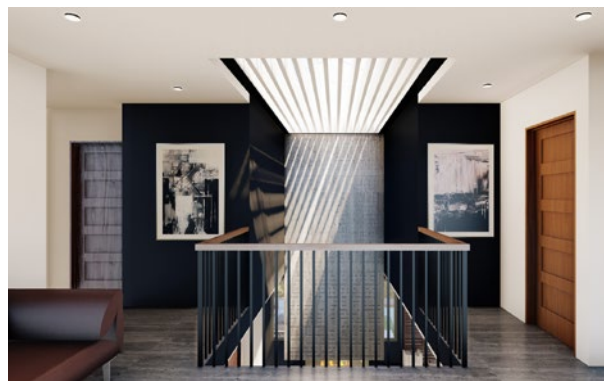
Scope of work:

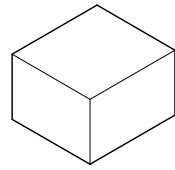
- Schematic design
- Design development
- Working drawing & coordination

The IC House is a modern-style residence situated in El Jadida, Morocco, one of the country's most picturesque cities, renowned for its imposing stone walls. The house's geometry and materials mirror the city's style and aesthetic. Moreover, it has been meticulously designed to meet the users' requirements in terms of spatial design, energy efficiency, and psychological well-being, including the quality of daylight, a connection with nature, and the seamless integration of indoor and outdoor spaces.

The open outdoor spaces and terraces encourage social interaction and a connection with nature, promoting a holistic living experience that's in harmony with sustainable principles. The landscaping design presents a sophisticated blend of formality and naturalism,

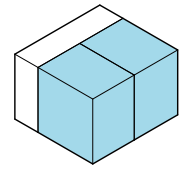
The choice of native plant species that require less water and maintenance.





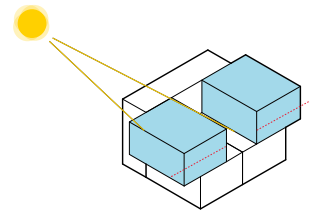
Fundamental Cube Form

The design originates from a basic cubic form, establishing a solid and elemental architectural presence.



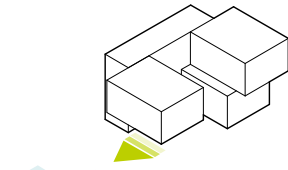
Spatial Division - Living and Circulation

The cube is partitioned into distinct zones for living spaces and circulation to create a clear organizational layout.



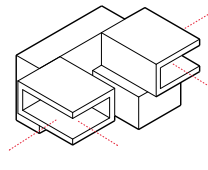
Upper Volume and Sunlight Control

The upper volume features strategic openings that welcome sunlight while shielding the living room from direct summer sun exposure.



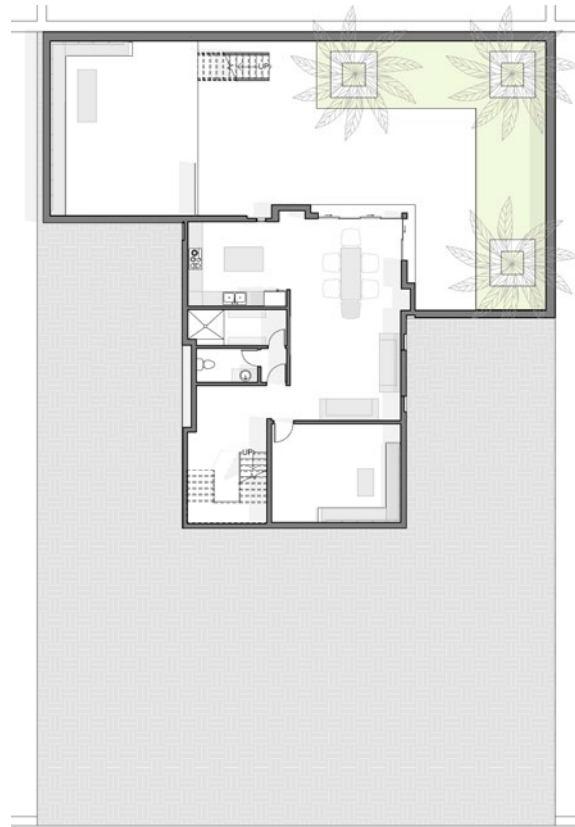
South Façade and Pool View

On the lower level, the south façade is designed to offer uninterrupted views of the pool, enhancing the connection between indoor and outdoor spaces.

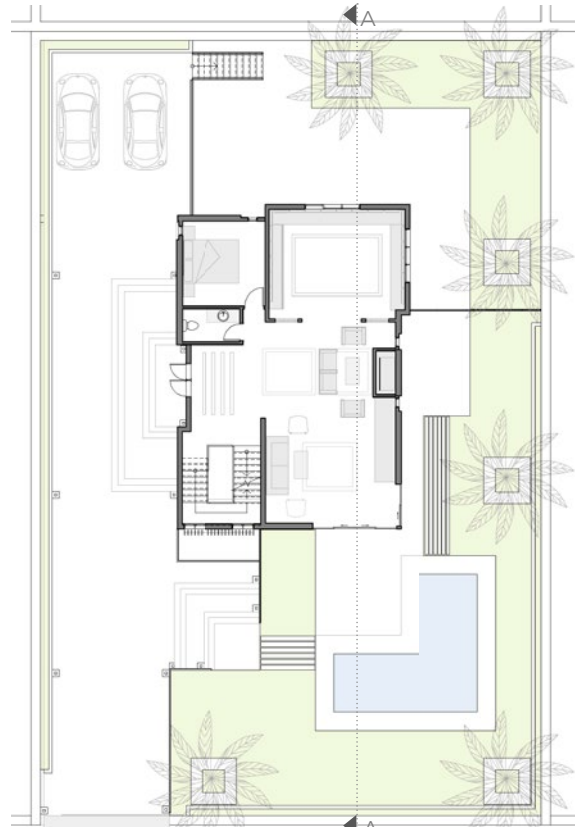


Maximized Experience with Open Views

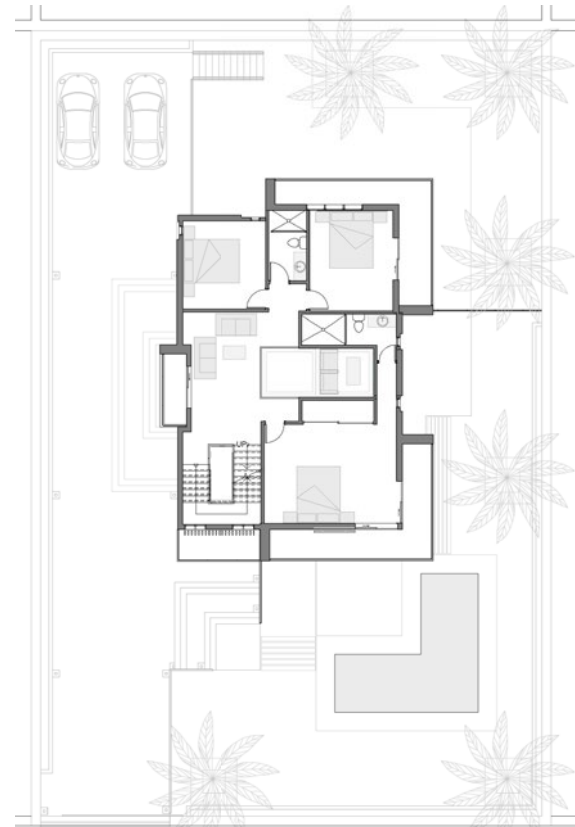
To enrich the living experience, the rooms are designed with open views that capture the mountainous landscape and surrounding nature.



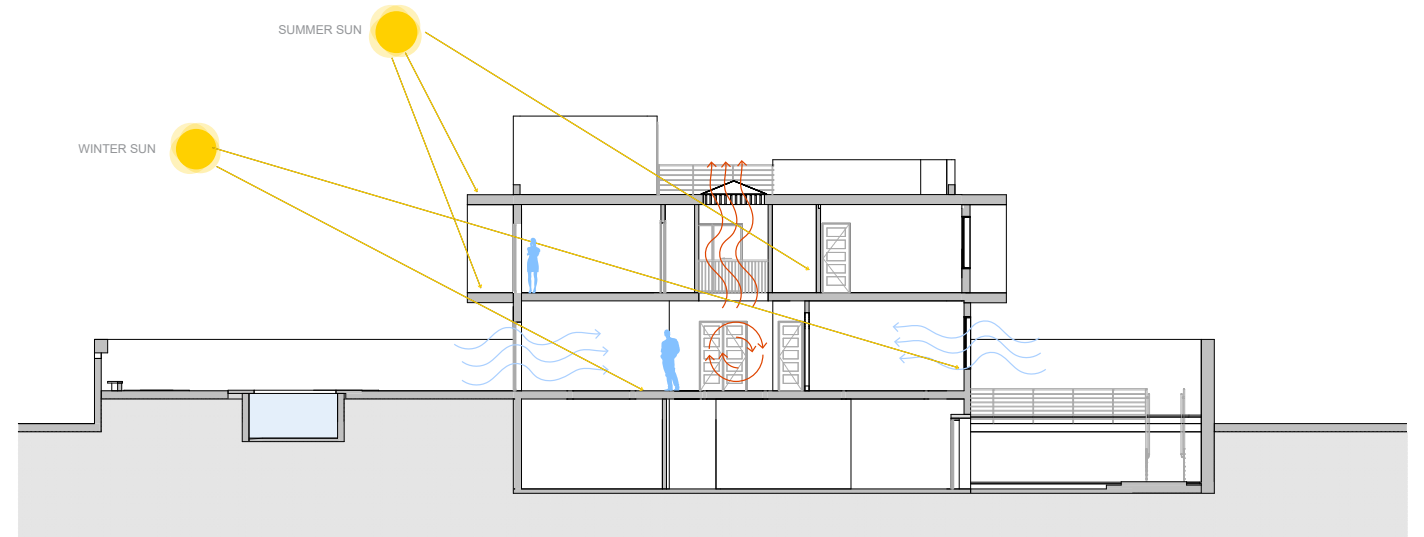
Basement



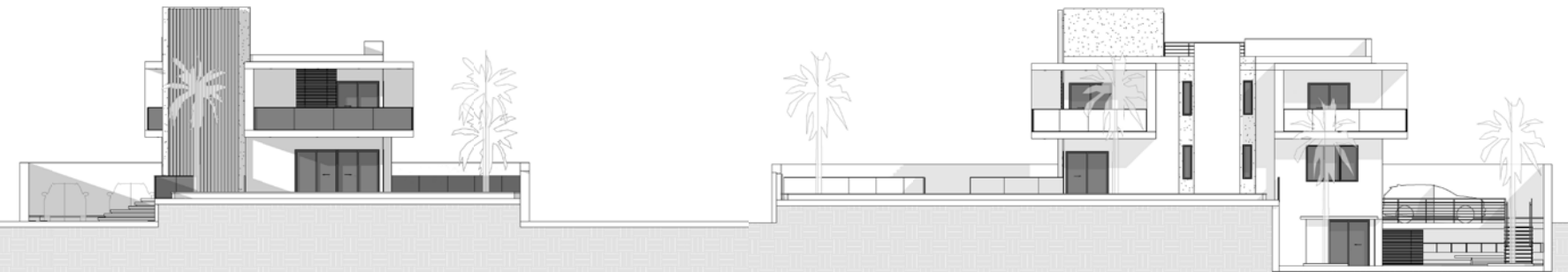
Level 1



Level 2



Section AA



South elevation

East elevation



Construction site - Contract administration and field review

Our scope of work for this project was to direct the evolution of the building from the initial excavation to the structural framework. We ensured the foundational work was performed to specifications, monitored the adherence of the framework to our architectural plans, and facilitated collaboration among the construction team.

COMMERCIAL



CITY SNACK RESTAURANT
Rabat, Morocco
2020



TAZAJ RESTAURANT
Casablanca, Morocco
2017



COCON CHILD CARE
St-austache, Canada
2015



CITY SNACK RESTAURANT

Role: Architect

Firm: MEA Architecture, Rabat, Morocco

Scope of work:

- Schematic design
- Design development
- Construction management

The City Snack Restaurant design offers a stylish and contemporary dining experience in the heart of the urban landscape. The interior showcases a harmonious blend of industrial chic and modern comfort, with clean lines and a monochromatic color palette complemented by the warmth of wood and the rustic charm of exposed brick. Overhead, unique lighting fixtures give a soft glow, creating an inviting ambiance that beckons diners to savor the moments as much as the food. The exterior, with its sleek, glass frontage, entices passersby into a space that's not only a place to eat but a destination to enjoy, relax, and socialize.

TAZAJ RESTAURANT

Role: Architect

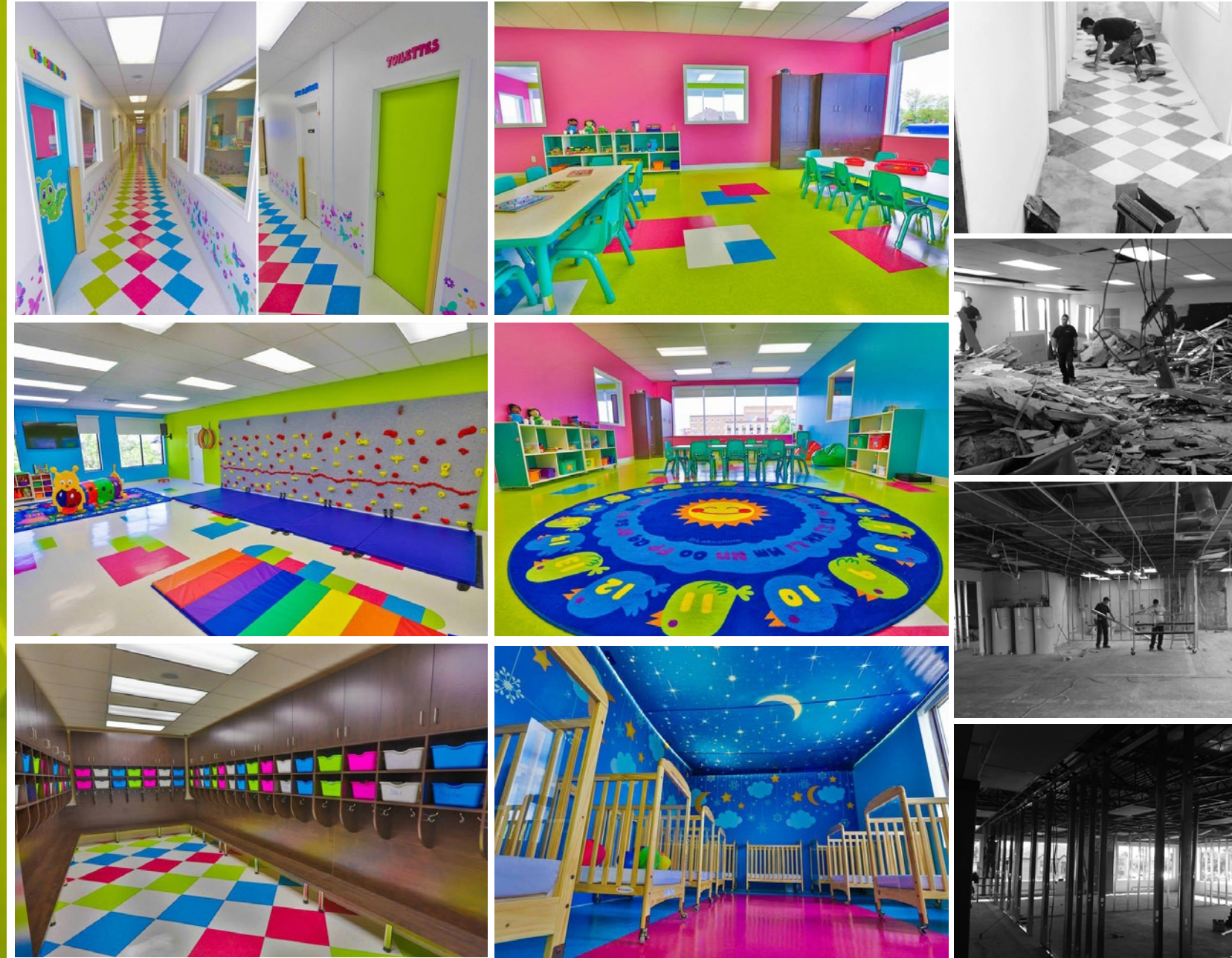
Firm: MEA Architecture, Rabat, Morocco

Scope of work:

- Schematic design
- Design development
- Construction management

This fast-food restaurant design captivates with its lively blend of urban flair and seaside vibrance. Inside, the playful array of colorful ceiling tiles mirrors the vivid hues of the coastal palette, while the natural wood accents bring the warmth of the beach indoors. The graphic murals on the walls add a dynamic energy reminiscent of the bustling city streets, complemented by the tranquil blues and greens that nod to the nearby sea. The space is designed to create a seamless transition from the rapid pace of city life to the refreshing and serene ambiance of the ocean, making it a unique culinary oasis for locals and visitors alike.





COCON CHILD CARE

Role: Architect

Firm: MEA Architecture, Rabat, Morocco

Scope of work:

- Schematic design
- Design development
- Construction management

This project transforms a childcare environment into a vibrant tapestry of learning and play. The design utilizes a kaleidoscope of colors, from the geometric patterns on the floors to the inspirational quotes on the stair risers, each element is crafted to stimulate creativity and curiosity in young minds.

Interactive features, like the wall-mounted play areas and the starry sky ceiling, encourage imaginative exploration, while the thoughtfully arranged classrooms and lockers cater to the practical needs of an educational setting. The transformation from a blank structural canvas to this stimulating educational facility underscores a commitment to fostering a nurturing and dynamic space for children to grow and learn.

COMPETITION / RESEARCH PROJECTS



GREEN DIAMOND
Master of architecture - University of
Calgary
Senior Research Studio
2014



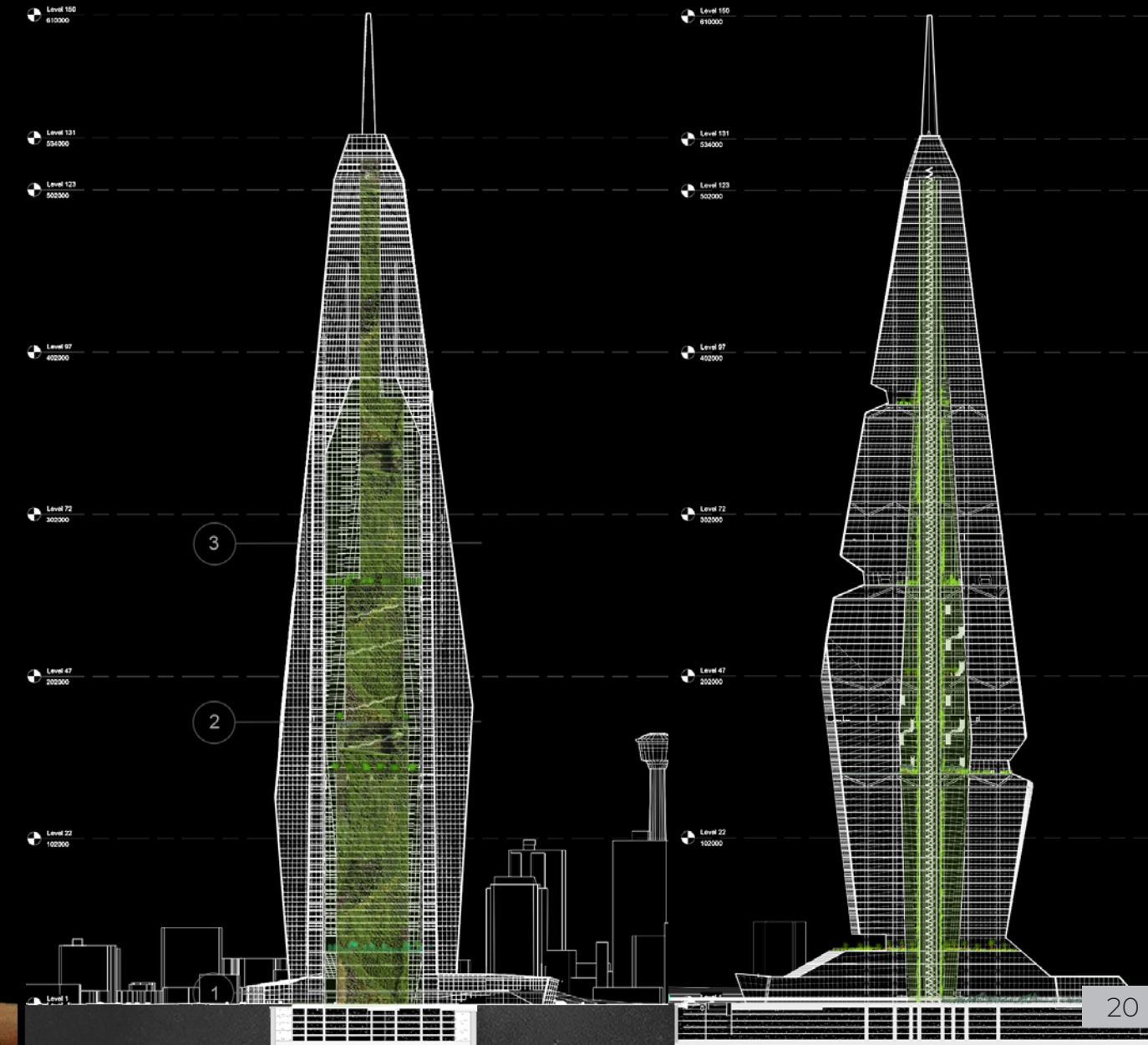
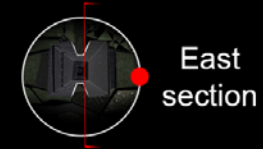
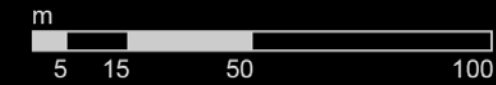
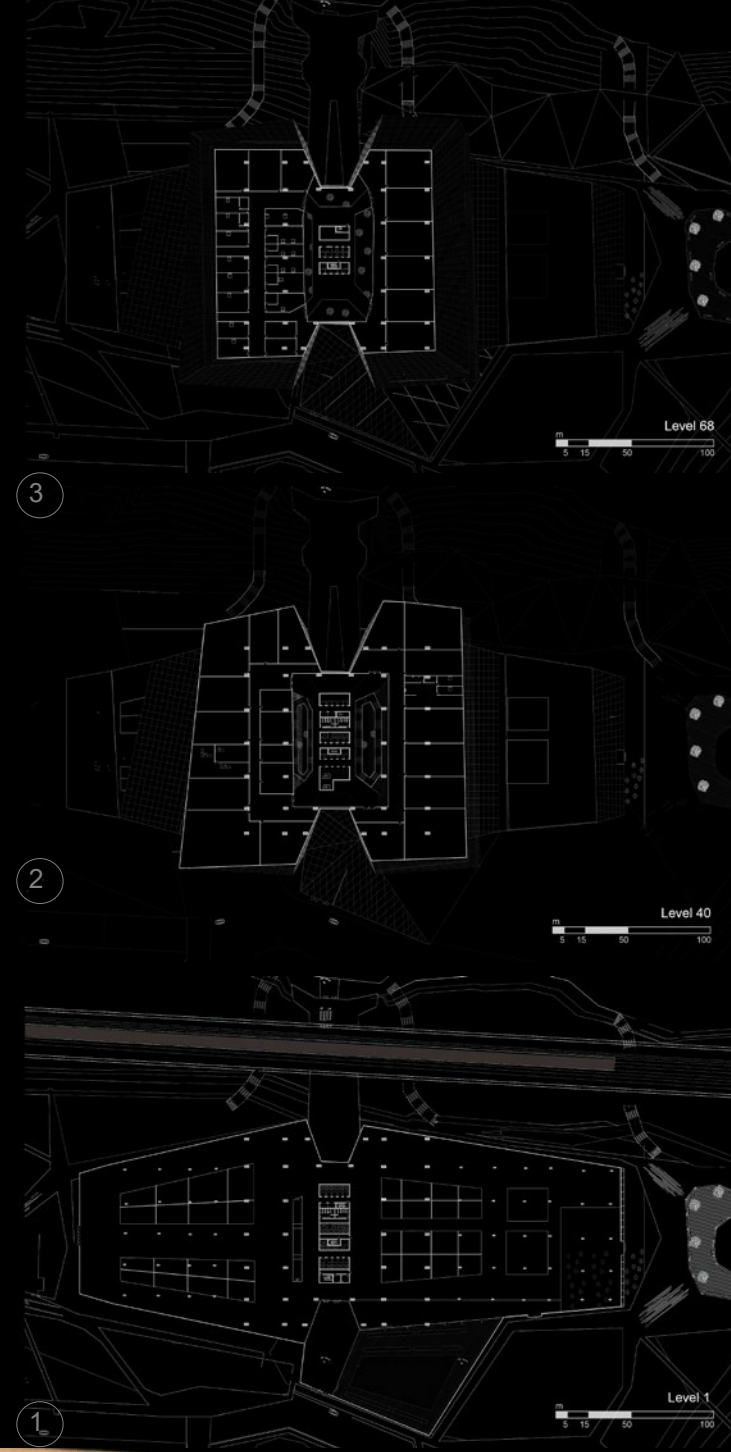
RESTORATIVE REFUGE
Master of architecture - University of
Calgary
Senior Research Studio
2014

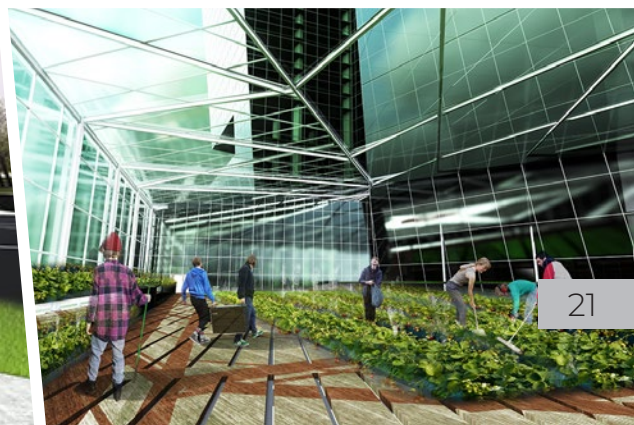
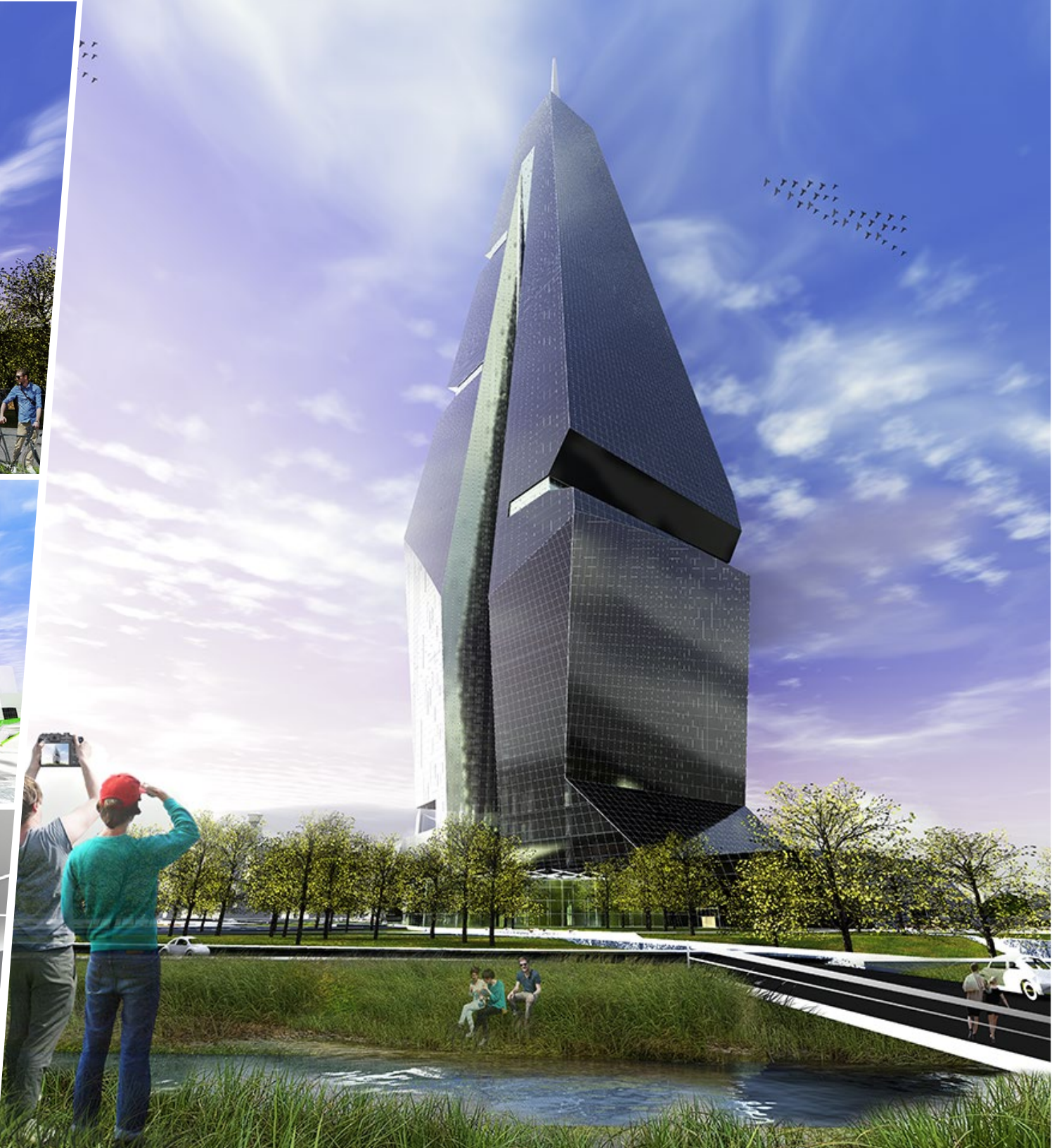
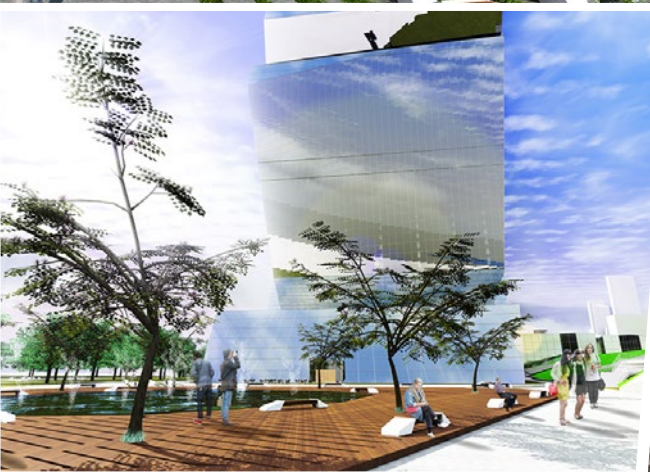


GREEN DIAMOND

DESIGN COMPETION - EVOLO

The green diamond is a bold architectural statement rising into the sky, its unique form a landmark in urban innovation. The tower's multifaceted glass façade reflects the changing light of day, embodying the dynamic nature of the city itself. With lush green spaces that cascade down its structure, this building blurs the lines between the natural and the built environment, creating an oasis of tranquility amid the city bustle. The integration of public and private realms within its design invites community interaction and engagement, making it more than just a building—it's a destination. From leisurely afternoons on its terraces to the buzz of activity in its interior atriums, The Crystal Diamond is designed to be as vibrant and multifunctional as the city it resides in.



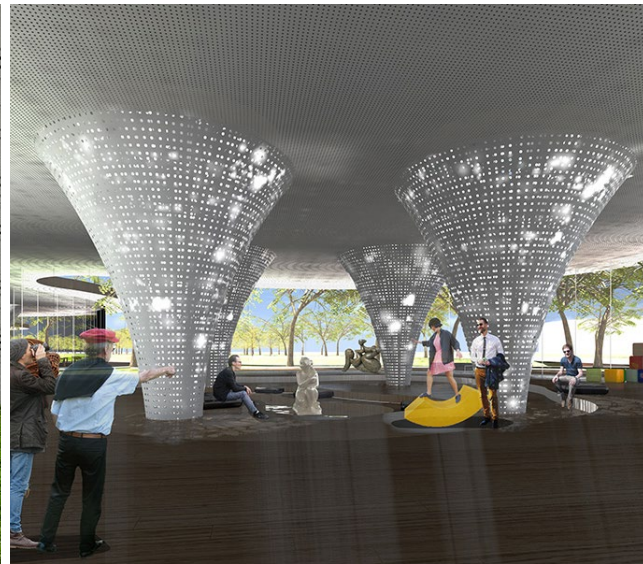


THE RESTORATIVE REFUGE

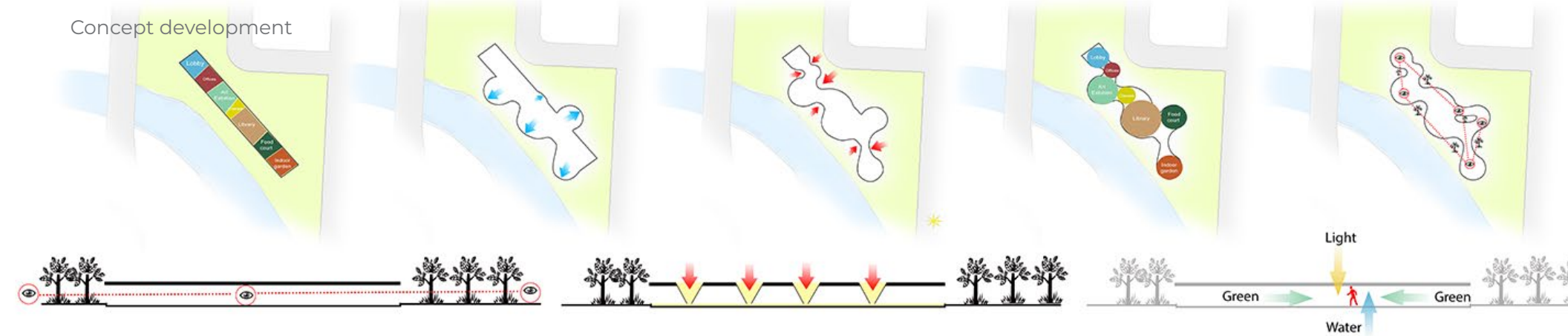
DESIGN COMPETITION

The Restorative Refuge is an architectural project where the principles of psychology and wellness are translated into space. Designed as a public space that merges seamlessly with nature, it offers a sanctuary within the urban landscape. The structure is a testament to contemporary design, blurring the line between the indoors and the outdoors, encouraging occupants to engage with both the built environment and the natural world.

Graceful, tree-like columns rise to support a canopy that filters light, casting organic patterns below, reminiscent of a forest's understory. This environment is envisioned to house a diverse program including an art gallery, library, offices, classrooms, a food court, and an indoor garden, fostering a community centered on growth and well-being.



Concept development



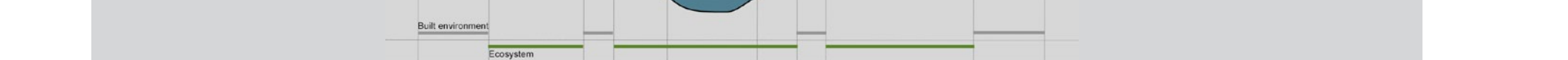
Sustainability analysis



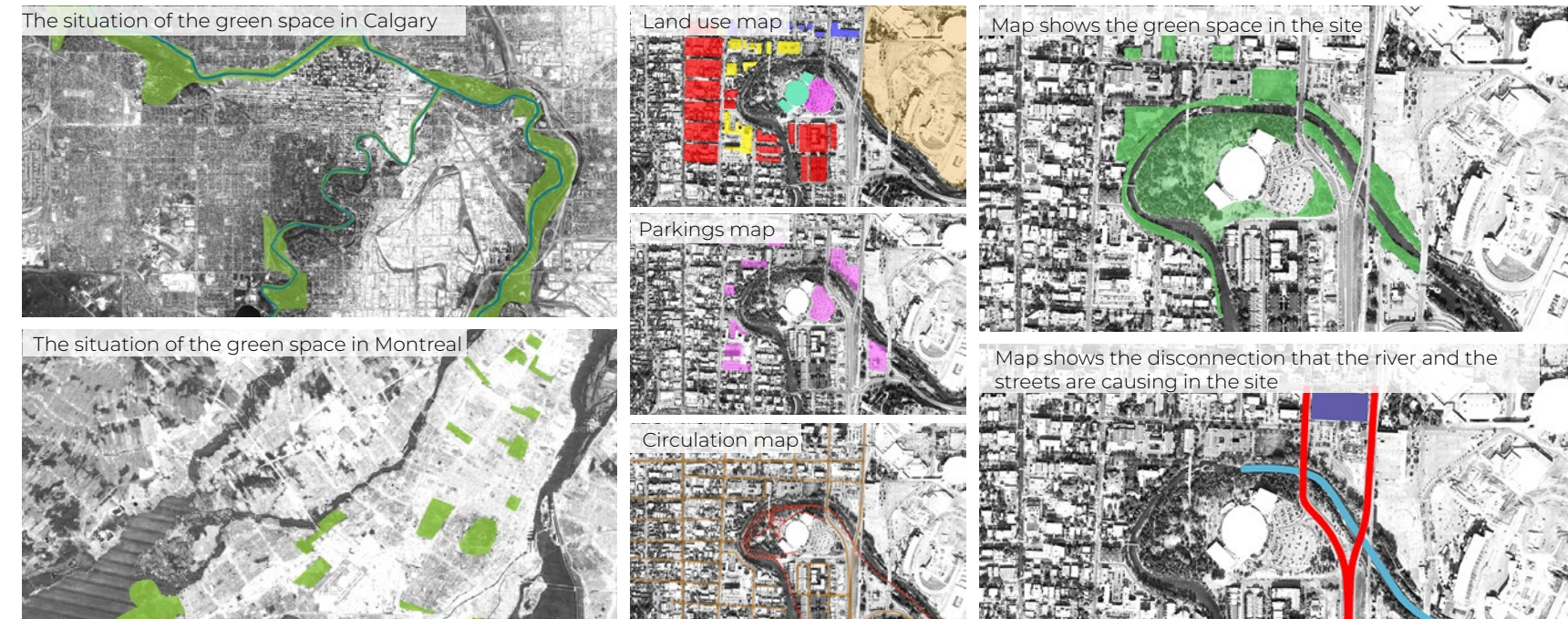
Tectonic analysis



Section analysis



Mapping



The situation of nature in Calgary is very unique in terms of its relationship to the city. The river forces the city to keep nature an important interior element by creating a continuity of nature.

Plan



THANK YOU